



PREMIUM CATALOGUE[®]

Result[®]

SPIRO

WORK-GUARD

RESULT SPIRO

S287X/S287B IMPACT PERFORMANCE AIRCOOL T-SHIRT	05
S288X/S288B IMPACT PERFORMANCE AIRCOOL POLO SHIRT	05

WORKGUARD

R200B/R200X HI VISIBILITY VEST - DAY WEAR ONLY	07
R462X HI VISIBILITY VEST - DAY / NIGHT	07
R466X WORKGUARD BASIC POLO	08
R465X / R464X / R463 PEAK PERFORMANCE - T-SHIRT / SINGLET / POLO	08
R461X REVERSIBLE FLEECE LINED SAFETY VEST - DAY / NIGHT	09
R450X HI VISIBILITY PRINTABLE SOFTSHELL JACKET	09
R454X / R455X / R455B LONG SLEEVE THERMAL	10
H15700 HARD HAT PROTECTIVE BRIM	10
B001 ACRYLIC KNITTED FLURO BEANIE	10

RESULT

R033X/R033B, R036X/R036B POLARATHERM ZIP TOP, POLARATHERM FULL ZIP JACKET	12
R121M/R121F/R121B CLASSIC SOFTSHELL JACKET	13
R014M/R014F, R118X CLASSIC SOFTSHELL VEST, ICE FELL HOODED SOFTSHELL JACKET	14
R181X, R111X HOLKHAM UNISEX PUFFER JACKET, URBAN FELL TECHNICAL JACKET	15
R194M/R194F, R1940M/R1940F SNOWBIRD HOODED JACKET & VEST	16
R224M/R224F/R224B TX PERFORMANCE SOFTSHELL JACKET	17
R231M/R231F, R232M/R232F CORE PRINTABLE SOFTSHELL JACKET & VEST	18
R203X/R203B, R204X CORE DRI-WARM & LITE JACKET, CORE ADULT WINDCHEATER	19
R205X, R226X/R226B CORE LIGHTWEIGHT JACKET, RAIN TROUSERS	20
R207X CORE WINTER PARKER	21

U-FLEX

U15502, KU15502 SNAP BACK TRUCKER (ADULTS & KIDS)	24
U15606, KU15606 SNAP BACK 6 (ADULTS & KIDS)	25
U15618, U15518 HIGH TECH CURVED PEAK SNAPBACK, PRO STYLE 5 PANEL SNAPBACK	26
U15608, KU15608 PRO STYLE SNAP BACK 6 (ADULTS & KIDS)	27
U15607, U15604 FASHION 6, FITTED FLAT PEAK	28
U15603, KU15603 PRO STYLE 6 PANEL (ADULTS & KIDS)	29

HEADWEAR 24

6009, K001 6 PANEL BRUSHED COTTON, KIDS 6 PANEL CAP	32
V6009, M6001 6 PANEL BRUSHED COTTON, METAL SANDWICH PEAK	33
S12607, S12608 SNAP BACK ORIGINAL, SNAP BACK 2 TONE	34
5003, 6027 MAC TRUCKER, CAMO HUNTER	35
6033A, 6044 BUCKET HAT, SANDWICH BUCKET HAT	36
S6048, 6055 SAFARI WIDE BRIM HAT, MICROFIBRE BUCKET HAT	37
6056, 6609 PERFORMER, POLY/COTTON FADE RESISTANT CAP	38
S15502, S16052 ATHLETE ELASTIC VISOR, ATHLETE 6 PANEL CAP	39
B003, 5002 CABLE KNIT FLEECE BEANIE, SKULL BEANIE	40
B001 CUFFED KNITTED BEANIE	40

PREM-SUB

OFF-FIELD

PS-01100, PS-01110, PS-01120, PS-01130 PULLOVER / FULL ZIP HOODIE	43
PS-01160, PS-01170, PS-01140, PS-01150 TRAINING LONGSLEEVE / SLEEVELESS HOODIE	43
PS-01180, PS-01190 QTR. ZIP PULLOVER	43
PS-01200, PS-01210, PS-01220, PS-01230 WARM UP JACKET / PANTS	44
PS-01240, PS-01250, PS-01260, PS-01270 QTR. FULL ZIP HYBRID HOODIE	44
PS-01460, PS-01470 WOVEN SHIRT	44
PS-01280, PS-01290, PS-01300, PS-01310, PS-01320, PS-01330 T-SHIRT / LONGSLEEVE RAGLAN	45
PS-01340, PS-01350, PS-01360, PS-01370, PS-01380, PS-01390 T-SHIRT / LONGSLEEVE SET SLEEVE	45
PS-01400, PS-01410, PS-01420, PS-01430, PS-01440, PS-01450 SINGLET / RACERBACK SINGLET	45

BASEBALL / SOFTBALL

PS-02100, PS-02110, PS-02120, PS-02130, PS-02140, PS-02150 FULL BUTTON JERSEY / SLEEVELESS	46
PS-02160, PS-02170, PS-02180, PS-02190, PS-02200, PS-02210 2-BUTTON JERSEY / SLEEVELESS	46
PS-02320, PS-2330, PS-02340 TRADITIONAL T-SHIRT	47
PS-02220, PS-02230, PS-02240, PS-02250 FULL LENGTH PANTS / HYBRID	47
PS-02260, PS-02270, PS-02280, PS-02290, PS-02300, PS-02310 THREE QTR. PANTS / HYBRID	47

BASKETBALL

PS-03190, PS-03200, PS-03210 STANDARD SINGLET	48
PS-03100, PS-03120, PS-03110 ELITE SINGLET	48
PS-03160, PS-03170, PS-03180 SLAM DUNK SINGLET	49
PS-03250, PS-03270, PS-03260 REVERSIBLE SINGLET	49
PS-03220, PS-03230, PS-03240 STANDARD SHORTS	50
PS-03130, PS-03140, PS-03150 ELITE SHORTS	50
PS-03280, PS-03290, PS-03300 REVERSIBLE SHORTS	50

COMPRESSION

PS-04120, PS-04130, PS-04140, PS-04150, PS-04160, PS-04170, PS-04100, PS-04110 LONGSLEEVE / SLEEVELESS / SHORT SLEEVE COMPRESSION TOP	51
PS-04210, PS-04220, PS-04230 COMPRESSION LEGGINGS	51
PS-04180, PS-04190, PS-04200 COMPRESSION SHORTS	52
PS-04240, PS-04250, PS-04260 COMPRESSION 3/4 LEGGINGS	52

CRICKET

PS-05100, PS-05120, PS-05110 RAGLAN PLAYING POLO	53
PS-05210, PS-05220, PS-05230 ELITE RAGLAN PLAYING POLO	53
PS-05130, PS-05140 LONGSLEEVE JERSEY	54
PS-05170, PS-05190, PS-05180, PS-05200 VEST / LINED VEST	54
PS-05150, PS-05160 TROUSER	54

CYCLING

PS-06100, PS-06110, PS-06120, PS-06130, PS-06140, PS-06150 CYCLING JERSEY / LONGSLEEVE	55
PS-06160, PS-06170 BMX LONGSLEEVE JERSEY	55

HOCKEY

PS-07220, PS-07230 MENS / YOUTH PLAYING TOP	56
PS-07160, PS-07170, PS-07140, PS-07150 LADIES PLAYING TOP / RACERBACK SINGLET	56
PS-07100, PS-07110, PS-07120, PS-07130 STANDARD / RACERBACK DRESS	57
PS-07180, PS-07190, PS-07200, PS-07210 SKIRT / SKORT	57
PS-07240, PS-07250 PREMIER SHORTS	57

ICE HOCKEY

PS-08100, PS-08110, PS-08120 PLAYING JERSEY / GOALIE JERSEY	58
PS-08130, PS-08140 PLAYING PANT SHELL	58
PS-08150, PS-08160 PLAYING SOCKS	58

NETBALL

PS-09100, PS-09110, PS-09120, PS-09130 STANDARD / RACERBACK DRESS	59
PS-09140, PS-09150 ELUTE A-LINE DRESS	59
PS-09160, PS-09170, PS-09180, PS-09190 PLAYING TOP / SLEEVELESS TOP	59
PS-09200, PS-09210 PLAYING SINGLET	60
PS-09220, PS-09230, PS-09240, PS-09250, PS-09260, PS-09270 FULL SKIRT / WRAP SKIRT / SKORT	60
PS-09280, PS-09290 BIB SETS	60

RUGBY / RUGBY LEAGUE

PS-11100, PS-11110 STANDARD FIT JERSEY	62
PS-11120, PS-11130 PROFIT JERSEY	62
PS-11150, PS-11160 TAPERED JERSEY	63
PS-11170, PS-11180 LONGSLEEVE JERSEY	63
PS-11190, PS-11200, PS-11210 UNION STANDARD SHORTS	64
PS-11220, PS-11230, PS-11240 ELITE SHORTS	64

ROWING

PS-10100, PS-10110, PS-10120 ROWSUIT	61
--	-----------

SOCCER

PS-12100, PS-12110 STANDARD PLAYING TOP	65
PS-12120, PS-12130, PS-12140, PS-12150 PREMIER PLAYING TOP / LONGSLEEVE	65
PS-12200, PS-12210 GOALIE JERSEY	65
PS-12160, PS-12170 STANDARD PLAYING SHORTS	66
PS-12180, PS-12190 PREMIER PLAYING SHORTS	66

TRACK / ATHLETICS

PS-14130, PS-14140, PS-14150 STANDARD TRACK SINGLET	67
PS-14100, PS-14110, PS-14120 ELITE TRACK SINGLET	67
PS-14160 LADIES CROP TOP	68
PS-14170, PS-14180 TRACK SHORTS	68

VOLLEYBALL

PS-15100, PS-15110, PS-15120 LADIES CAP / LONG / SLEEVELESS JERSEY	69
PS-15140, PS-15150 SHORT SLEEVE / SLEEVELESS JERSEY	69
PS-15160 PLAYING SHORTS	70
PS-15130 LADIES PLAYING SPANKS	70

OUTERWEAR

PS-16140, PS-16150, PS-16160, PS-16170, PS-16180, PS-16190, PS-16200, PS-16210 FULL ZIP / HALF ZIP / HYBRID RAIN JACKET	71
PS-16100, PS-16110 SOFTSHELL JACKET	71
PS-16220, PS-16230, PS-16240, PS-16250 TRACK JACKET / PANTS	72
PS-16120, PS-16130 LETTERMAN / VARSITY JACKET	72
PS-16260, PS-16270, PS-16280, PS-16290 PUFFER JACKET / VEST	73
PS-16300, PS-16310, PS-16320 ULTRA LIGHTWEIGHT RUNNING JACKET	73

TOUCH

PS-13100, PS-13110, PS-13120 CONTACT SINGLET	74
PS-13130, PS-13140, PS-13150 CONTACT SHORTS	74

ACCESSORIES

PS-17100, PS-17110 KEGGER BAG	75
PS-17120, PS-17130 BLAST BAG	75
PS-17140 CINCH BAG	75
PS-17150 SHUTOUT BACK PACK	75
PS-17160 ARM SLEEVE	76
PS-17180 RUGBY / SOCCER / HOCKEY SOCKS	76
PS-17190 MID LENGTH SOCKS	76
PS-17200 ANKLE SOCKS	76



SPIRO



S287X (ADULT) / S287B (YOUTH)
IMPACT PERFORMANCE AIRCOOL T-SHIRT

FABRIC 130g/m² 100% Polyester Bird Eye Mesh
 SIZES - Adult S / M / L / XL / 2XL / 3XL / 4XL / 5XL
 SIZES - Youth Y4 / Y6 / Y8 / Y10 / Y12 / Y14
 COLOURS Black, Bottle, Combat, Fluorescent Green, Fluorescent Pink, Grey, Lime, Navy, Ocean, Orange, Purple, Red, Royal, Super Pink, White

Air dry soft mesh fabric tee with HighTec stretch, retention and superior drape • Breathable • 15 colours • Tag free • Ideal for water based inks • Feather weight with enhanced drape & feel • HighTec stretch with brilliant shape retention • QuickDry pique knit fabric for easy breath-ability • Fit for comfort wear • Top stitch shoulder and sleeve detail.

DECORATION PROCESS: Screen Print / Embroidery / Transfer

COLOURS



ADULT Sizes in CM

CM	S	M	L	XL	2XL	3XL	4XL	5XL
CHEST	48.5	52	56	60	64	68	72	76
LENGTH	68	70	73	76	79	81	83	85

YOUTH Sizes in CM

CM	Y4	Y6	Y8	Y10	Y12	Y14
CHEST	32	36	40	42	40	42
LENGTH	46	50	56	61	56	61



S288X (ADULT) / S288B (YOUTH)
IMPACT PERFORMANCE AIRCOOL POLO SHIRT

FABRIC 135g/m² 100% Polyester Bird Eye Mesh
 SIZES - Adult S / M / L / XL / 2XL / 3XL / 4XL / 5XL
 SIZES - Youth Y4 / Y6 / Y8 / Y10 / Y12 / Y14
 COLOURS Black, Bottle, Combat, Fluorescent Green, Fluorescent Pink, Grey, Lime, Navy, Ocean, Orange, Purple, Red, Royal, Super Pink, White

Air dry soft mesh fabric polo with HighTec stretch, retention and superior drape • Breathable • 15 colours • Ribbed Collar • Tag free • Ideal for water based inks • Feather weight with enhanced drape & feel • HighTec stretch with brilliant shape retention • QuickDry pique knit fabric for easy breath-ability • Full fit for comfort wear • Top stitch shoulder and sleeve detail.

DECORATION PROCESS: Screen Print / Embroidery / Transfer

COLOURS



ADULT Sizes in CM

CM	S	M	L	XL	2XL	3XL	4XL	5XL
CHEST	48.5	52	56	60	64	68	72	76
LENGTH	68	70	73	76	79	81	83	85

YOUTH Sizes in CM

CM	Y4	Y6	Y8	Y10	Y12	Y14
CHEST	32	36	40	42	40	42
LENGTH	46	50	56	61	56	61



WORK GUARD



COLOURS



SAFETY YELLOW SAFETY ORANGE

R200X (ADULT) / R200B (YOUTH) HI VISIBILITY SAFETY VEST DAY WEAR ONLY

FABRIC 120g/m² 100% Polyester
 SIZES - Adult S-M / L-XL / 2XL-3XL / 4XL-5XL
 SIZES - Youth Y4-Y6 / Y7-Y9 / Y10-14
 COLOURS Fluro Yellow, Fluro Orange

Grey polyester bound edges • 50mm Sewn on safety tapes • Tear release fastening • Independently tested to comply with Standards AS/NZS 1906.4:2010; AS/NZS 4602.1:2011 Day Only.

Note: Generous in size allowing it to be worn as an over garment. These garments must be worn fastened and kept clean to maintain effectiveness.

DECORATION PROCESS: Screen Print / Embroidery / Transfer

ADULT Sizes in CM				
CM	S-M	L/XL	2/3XL	4/5XL
CHEST	66	69	75	81
LENGTH	76	76	76	76

YOUTH Sizes in CM			
CM	4-6	8-10	12-14
CHEST	44	48	52
LENGTH	45	54	58



COLOURS



SAFETY YELLOW SAFETY ORANGE

R462X (ADULT) HI VISIBILITY SAFETY VEST DAY / NIGHT

FABRIC 120g/m² 100% Polyester
 SIZES - Adult S-M / L-XL / 2XL-3XL / 4XL-5XL
 COLOURS Fluro Yellow, Fluro Orange (TTMC-W)

Self Fabric polyester bound edges • 50mm Sewn on safety tapes • Zip release fastening • Independently tested to comply with AS/NZS 1906.4:2010; AS/NZS 4602.1:2011 Day/Night.

Fluro Orange complies with TTMC-W for the code of compliance requirement.

Note: Generous in size allowing to be worn as an over garment. These garments must be worn fastened and kept clean to maintain effectiveness.

DECORATION PROCESS: Screen Print / Embroidery / Transfer

ADULT Sizes in CM				
CM	S-M	L/XL	2/3XL	4/5XL
CHEST	65	69	75	81
LENGTH	82	82	82	82



R466X (ADULT)

WORKGUARD BASIC POLO

FABRIC 135g/m² 100% Polyester Bird Eye Mesh
 SIZES - Adult S / M / L / XL / 2XL / 3XL / 4XL / 5XL
 COLOURS Fluro Yellow/Black, Fluro Yellow/Navy, Fluro Orange/Black, Fluro Orange/Navy

Quick dry pique knit fabric for easy breath-ability • High Tec stretch with shape retention • Breathable • Ideal for water based inks • Feather weight with enhanced drape & feel • Full fit for comfort wear - Modern styling • Top stitched shoulder and sleeve detail • Packed in **Quick Print** decorators bundles • Independently tested to comply with Standards AS/NZS 1906.4:2010; AS/NZS 4602.1:2011 Day/Night.

DECORATION PROCESS: Screen Print / Embroidery / Transfer

COLOURS



ADULT	Sizes in CM							
CM	S	M	L	XL	2XL	3XL	4XL	5XL
CHEST	48.5	52	56	60	64	68	72	76
LENGTH	68	70	73	76	79	81	83	85



R465X (T-SHIRT) / R464X (SINGLET) / R463X (POLO)

PEAK PERFORMANCE T-SHIRT / SINGLET / POLO

FABRIC 135g/m² 100% Polyester Bird Eye mesh
 SIZES - Adult S / M / L / XL / 2XL / 3XL / 4XL / 5XL
 COLOURS Fluro Yellow/Black, Fluro Yellow/Navy, Fluro Orange/Black, Fluro Orange/Navy

Quick dry pique knit fabric for easy breath-ability • HighTec stretch with shape retention • Breathable • Ideal for water based inks • Feather weight with enhanced drape & feel • Full fit for comfort wear - Modern styling • Top stitched shoulder and sleeve detail • Packed in **Quick Print** decorators bundles • Independently tested to comply with Standards AS/NZS 1906.4:2010; AS/NZS 4602.1:2011 Day Only.

DECORATION PROCESS: Screen Print / Embroidery / Transfer

COLOURS



ADULT	Sizes in CM							
CM	S	M	L	XL	2XL	3XL	4XL	5XL
CHEST	48.5	52	56	60	64	68	72	76
LENGTH	68	70	73	76	79	81	83	85



R461X (ADULT)

REVERSIBLE FLEECE LINED SAFETY VEST - DAY / NIGHT

FABRIC - Outer 100% 300D Oxford Polyester
 FABRIC - Inner Polyester Fleece Lining
 SIZES - Adult S-M / L-XL / 2XL-3XL / 4XL-5XL
 COLOURS Fluro Yellow, Fluro Orange (TTMC-W17)

Self Fabric polyester bound edges • 50mm Sewn on safety tapes
 • Zip release fastening • Reversible with fleece lining • Pockets inside and out • Independently tested to comply with AS/NZS 1906.4:2010; AS/NZS 4602.1:2011 Day/Night.

Fluro Orange complies with TTMC-W17 for the code of compliance requirement.

Note: Generous in size allowing it to be worn as an overgarment. These garments must be worn fastened and kept clean to maintain effectiveness.

DECORATION PROCESS: Screen Print / Embroidery / Transfer

ADULT Sizes in CM

CM	S-M	L/XL	2/3XL	4/5XL
CHEST	65	69	75	81
LENGTH	82	82	82	82

COLOURS



R450X (ADULT)

HI VISIBILITY PRINTABLE SOFTSHELL JACKET

FABRIC 120g/m² 100% Polyester
 SIZES - Adult S / M / L / XL / 2XL / 3XL / 4XL / 5XL
 COLOURS Fluro Yellow/Black, Fluro Orange/Black

Durable water repellent finish • Breathable • Windproof • Reflective print body bands • Dark lower panel masks grime • Soft bound cuff • Stand up collar • Lightweight & warm • Quiet to wear • Independently tested to comply with Standards AS/NZS 1906.4:2010; AS/NZS 4602.1:2011 Day/Night.

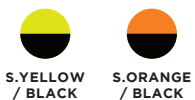
Note: Always test to ensure inks and devices are suitable for printing on this fabric. Generous in size allowing to be worn as an overgarment. These garments must be worn fastened and kept clean to maintain effectiveness.

DECORATION PROCESS: Screen Print / Embroidery / Transfer

ADULT Sizes in CM

CM	XS	S	M	L	XL	2XL	3XL	4XL	5XL
CHEST	-	54	57	61	65	69	72	76	-
LENGTH	-	70	72	74	76	78	80	82	-

COLOURS





COLOURS



R454X (Round Neck) / R455X/B (V-Neck Adult/Youth)

LONG SLEEVE THERMAL - V-NECK / ROUND NECK

FABRIC 265g/m² 50/50 Poly/Viscose
 SIZES - Adult XS / S / M / L / XL / 2XL / 3XL / 4XL / 5XL
 SIZES - Youth Y4 / Y6 / Y8 / Y10 / Y12 / Y14
 COLOURS Black, Navy, White (V-Neck only)

Round (Crew) or V-Neck (Youth sizes only available in V-Neck) • Breathable • Soft against the skin • Odour free.

DECORATION PROCESS: Screen Print / Embroidery / Transfer

ADULT Sizes in CM

CM	XS	S	M	L	XL	2XL	3XL	4XL	5XL
----	----	---	---	---	----	-----	-----	-----	-----

CHEST	39	42	45	48	51	54	57	60	63
LENGTH	68.5	71	73.5	76	78.5	81	83.5	86	88.5

YOUTH (V-NECK ONLY) Sizes in CM

CM	XS(4-6)	S(6-8)	M(8-10)	L(10-12)	XL(12-14)
----	---------	--------	---------	----------	-----------

CHEST	40	43	46	49	52
LENGTH	49.5	54.5	57.5	61.5	65.5

H15700 (One Size Fits All)

HARD HAT PROTECTIVE BRIM

FABRIC 100% Polyester
 SIZES - Adult One size fits all
 COLOURS Fluro Yellow, Fluro Orange

Shade Brim to go over your Hard Hat • Made from UV stabilised polypropylene • Moisture Wicking polyester neck flap for neck protection • Full brim for maximum coverage.

Dimensions: Circumference = 72cm, Brim Width = 9cm.

DECORATION PROCESS: Screen Print / Embroidery / Transfer



COLOURS



B001 (One Size Fits All)

ACRYLIC KNITTED FLURO BEANIE

FABRIC 100% Acrylic
 SIZES - Adult One size fits all
 COLOURS Fluro Yellow, Fluro Orange

Fold up band • Acrylic Knit • One size fits all

DECORATION PROCESS: Embroidery / Transfer



COLOURS





Result[®]



COLOURS



R033X (ADULT) / R033B (YOUTH) POLARTHERM QTR. ZIP TOP

FABRIC 330g/m² 100% Polyester heavy Active Fleece
 SIZES - Adult XS / S / M / L / XL / 2XL / 3XL
 SIZES - Youth 4-6 / 6-8 / 8-10 / 10-12 / 12-14
 COLOURS Black, Maroon, Navy, Royal, Forest, Red.

1/4 front zip fastening • Casual cut • Stretchy fit • Special fibres to ensure fabric absorbs a maximum 1% of its weight in moisture which evaporates with movement in the air • Front zip fastening • 2 Side pockets with fleece lining • Elasticated cuffs • Adjustable shock cord hem • Stretchy fit • Anti-piling • Casual cut • Easy care

DECORATION PROCESS: Embroidery.

ADULT Sizes in CM

CM	XS	S	M	L	XL	2XL	3XL		
CHEST	50	56	59	63	66	70	74	-	-
LENGTH	68	69	70	73	76	79	82	-	-

YOUTH Sizes in CM

CM	XS(4-6)	S(6-8)	M(8-10)	L(10-12)	XL(12-14)
CHEST	40	43	46	49	52
LENGTH	49.5	54.5	57.5	61.5	65.5



R036X (ADULT) / R036B (YOUTH) POLARTHERM FULL ZIP JACKET

FABRIC 330g/m² 100% Polyester heavy Active Fleece
 SIZES - Adult XS / S / M / L / XL / 2XL / 3XL
 SIZES - Youth 4-6 / 6-8 / 8-10 / 10-12 / 12-14
 COLOURS Red, Maroon, Royal, Navy, Forest, Black

Full front zip fastening • Casual cut • Stretchy fit • Special fibres to ensure fabric absorbs a maximum 1% of its weight in moisture which evaporates with movement in the air • Full front zip fastening • 2 Large front pockets with stitched outline feature • Elasticated cuffs • Adjustable shock cord hem • Anti-piling • Casual cut/stretchy

DECORATION PROCESS: Embroidery, Screen Print Transfer, Digital Transfer Print.

ADULT Sizes in CM

CM	XS	S	M	L	XL	2XL	3XL		
CHEST	50	56	59	63	66	70	74	-	-
LENGTH	68	69	70	73	76	79	82	-	-

YOUTH Sizes in CM

CM	XS(4-6)	S(6-8)	M(8-10)	L(10-12)	XL(12-14)
CHEST	40	43	46	49	52
LENGTH	49.5	54.5	57.5	61.5	65.5



COLOURS





R121M (MENS) / R121F (LADIES) / R121B (YOUTH) CLASSIC SOFTSHELL JACKET

- FABRIC - Outer 320g/m² Softshell 3 Layer 8000mm waterproof bonded fabric, 93% Polyester, 7% Elastane
 - FABRIC - Middle TPU waterproof, breathable & windproof membrane.
 - FABRIC - Inner Microfleece
 - SIZES - Mens S / M / L / XL / 2XL / 3XL / 4XL / 5XL
 - SIZES - Ladies S / M / L / XL / 2XL
 - SIZES - Youth 5-6 / 7-8 / 9-10 / 11-12 / 13-14
 - COLOURS Black, Navy, Red, Grey
- * Mens 4XL-5XL & Youth only available in Black & Navy.

Waterproof (Bonded fabric 8000mm) • Breathable (1000g) • Windproof • Soft high stretch fabric and comfortable active fit • Fashionable shaped longer back panel • YKK full front zip fastening with inner storm flap • 2 Zip closing side pockets, 1 zip closing chest pocket, 2 large inside pockets and 1 inside phone pocket • Adjustable shock cord hem • Decorative front and back yoke • Contains recycled material • Inner storm flap • Quick drying.

Youth: Smart look • School favorite • Tuck away hood into collar • Inside phone pocket (11-14 years only)

DECORATORS ACCESS POINTS: Concealed inner top and back and left chest zips.
DECORATION PROCESS: Embroidery.

COLOURS (MENS, LADIES)



BLACK NAVY GREY RED



MENS

Sizes in CM

CM	S	M	L	XL	2XL	3XL	4XL	5XL
CHEST	- 58	60	62	64	66	68	70	72
LENGTH	- 70	72	74	76	78	80	82	84

LADIES

Sizes in CM

CM	S(10)	M(12)	L(14)	XL(16)	2XL(18)
CHEST	- 54	56	58	60	62
LENGTH	- 66	68	70	72	74

Sizing approximate conversion.

YOUTH

Sizes in CM

CM	S(5-6)	M(7-8)	L(9-10)	XL(11-12)	2XL(13-14)
CHEST	47	49	52	54	57
LENGTH	57	59	61	63	65

COLOURS (YOUTH)



BLACK NAVY



COLOURS



BLACK NAVY



R014M (MENS) / R014F (LADIES)

CLASSIC SOFTSHELL VEST

FABRIC 320g/m² Softshell 3 Layer 8000mm waterproof bonded fabric, 93% Polyester, 7% Elastane

SIZES - Mens S / M / L / XL / 2XL / 3XL / 4XL / 5XL

SIZES - Ladies S / M / L / XL / 2XL

COLOURS Black, Navy.

Waterproof (Bonded fabric 8000mm) • Breathable (1000g) • Windproof • Soft high stretch fabric and comfortable active fit • Fashionable zip shaped longer back panel • YKK full front zip fastening with inner storm flap • 2 Zip closing side pockets, 1 zip closing chest pocket, 2 large inside pockets and 1 inside phone pocket • Adjustable shock cord hem • Decorative front and back yoke • Contains recycled material • Inner storm flap • Quick drying.

DECORATORS ACCESS POINTS: Concealed inner top and back and left chest zips.

DECORATION PROCESS: Embroidery.

MENS

Sizes in CM

CM	S	M	L	XL	2XL	3XL	4XL	5XL
CHEST	- 58	60	62	64	66	68	70	72
LENGTH	- 70	72	74	76	78	80	82	84

LADIES

Sizes in CM

CM	S	M	L	XL	2XL			
CHEST	- 47	50	52	55	57	-	-	-
LENGTH	- 65	66	67	68	70	-	-	-



COLOURS



BLACK NAVY RED BLACK



R118X (ADULTS)

ICE FELL HOODED SOFTSHELL JACKET

FABRIC - Outer 93% Polyester, 7% Elastane.

FABRIC - Middle Waterproof 8000mm, breathable 1000g, windproof TPU membrane

FABRIC - Inner 100% Polyester Microfleece

SIZES XS / S / M / L / XL / 2XL / 3XL

COLOURS Black, Navy, Red/Black

* Black available in 4XL & 5XL

310g/m² 3 layer bonded fabric comprising • Waterproof (Bonded fabric 8000mm) • Breathable (1000g) • Windproof • Ripstop shoulders and arm scuff panels for added strength and durability • Soft high stretch fabric • Inner storm flap • Concealed hood • Reflective piping to shoulder and sleeve • YKK full front zip • Zip closing side & chest pockets • Adjustable shock cord hem • Underarm zip ventilation • Easy open zip pulls • Tear release adjustable cuff • Microfleece inner provides extra warmth • Comfortable active fit • Extra strong seamless shoulder panels ensure water deflection • 2 inside tear release closing pockets • Microfleece inner provides extra warmth.

DECORATORS ACCESS POINTS: Concealed inner top back and left chest zips.

DECORATION PROCESS: Embroidery.

Sizes in CM

CM	XS	S	M	L	XL	2XL	3XL		
CHEST	53	58	60	62	64	66	68	-	-
LENGTH	69	70	72	74	76	78	80	-	-



R181X (ADULTS) HOLKHAM UNISEX PUFFER JACKET

FABRIC - Outer 100% StormDri Polyester
 FABRIC - Filling 150g/m² hand filled 100% Polyester wadding.
 FABRIC - Inner 100% Polyester
 SIZES XXS / XS / S / M / L / XL / 2XL / 3XL / 5XL
 COLOURS Black

Water repellent • Lightweight • Soft to touch • Tear release cuffs • Cosy fitting, lightweight & warm • Zipped 2 side pockets • Inner storm flap • Drawcord hem • Hand filled wadding • Full front zip • Ripstop micropeach fabric with inner acrylic coating • Super warm & light • Ripstop micropeach fabric with inner acrylic coating • Cosy fitting, lightweight & warm.

DECORATORS ACCESS POINTS: Concealed inner side seam and back panel.
DECORATION PROCESS: Embroidery, Transfer Print.

Sizes in CM

CM	XXS	XS	S	M	L	XL	2XL	3XL	5XL
CHEST	50.5	53	58	60.5	63	65.5	68	70.5	75.5
LENGTH	72	73	74	75	76	77	78	80	84

COLOURS



BLACK



R111X (ADULTS) URBAN FELL TECHNICAL JACKET

FABRIC - Outer 100% Nylon taslon with milky coating
 FABRIC - Lining 100% Polyester mesh
 SIZES XS / S / M / L / XL / 2XL / 3XL / 4XL / 5XL
 COLOURS Black/Grey

Waterproof 3000mm • Breathable 3000g • Windproof • Extremely lightweight and quick drying • Fully taped seams • PU inner coating • Integrated waterproof hood with drawcord adjusters • Easy open zip pulls • Full front zip fastening • 2 lined zip closing side pockets • 1 inside right chest lined zip closing pocket • Decorative piping in grey colour detail to arm and side panels • Tear release adjustable cuffs • Tear release inner storm flap with grey colour trim • Adjustable shock cord hem • Exceptionally waterproof and breathable.

DECORATORS ACCESS POINTS: Back hem only.
DECORATION PROCESS: Digital Transfer Print, Embroidery, Screen Printed Transfer.

Sizes in CM

CM	XS	S	M	L	XL	2XL	3XL	4XL	5XL
CHEST	57.5	60	62.5	65	67.5	70	72.5	75	77.5
LENGTH	68.5	71	76	78	80	82	84	86	88

COLOURS



BLACK GREY





R194M (MENS) / R194F (LADIES) - JACKET
SNOWBIRD HOODED JACKET

R1940M (MENS) / R1940F (LADIES) - VEST
SNOWBIRD HOODED VEST

FABRIC - Outer 100% 20D Nylon
 FABRIC - Filling 220g/m² 100% Polyester (Jacket)
 150g/m² 100% Polyester (Vest)
 FABRIC - Lining 100% 20D Nylon
 SIZES - Mens S / M / L / XL / 2XL / 3XL / 5XL
 SIZES - Ladies S / M / L / XL / 2XL / 3XL
 COLOURS Black, Navy (Vest only available in Black and Navy)
 Royal/Navy, Navy/Yellow, Charcoal/Orange.

Showerproof • Windproof • Full front zip • Zipped front pockets • Soft elasticated cuff • Adjustable hood • Hangtag • Fashionable quilted design • Super lightweight all season warmth • Quiet to wear.

DECORATORS ACCESS POINTS: Open.
DECORATION PROCESS: Embroidery.

COLOURS (R194M/R194F - JACKET)



MENS R194M - JACKET / MENS R1940M - VEST

Sizes in CM

CM	S	M	L	XL	2XL	3XL	4XL	5XL
CHEST	- 54	57	60	63	68	71	-	74
LENGTH	- 67	69	71	73	75	77	-	79

LADIES R194F - JACKET / LADIES R1940F - VEST

Sizes in CM

CM	S(10)	M(12)	L(14)	XL(16)	2XL(18)	3XL(20)
CHEST	- 50	53	56	59	62	65
LENGTH	- 64	66	68	70	72	74

Sizing approximate conversion.

COLOURS (R1940M/R1940F - VEST)





R224M (MENS) / R224F (LADIES) / R224B (YOUTH) TX PERFORMANCE SOFTSHELL JACKET

FABRIC - Outer 93% Polyester, 7% Elastane
 FABRIC - Middle Waterproof 8000mm, Breathable 1000g, Windproof TPU.
 FABRIC - Inner 100% Polyester Microfleece
 SIZES - Mens S / M / L / XL / 2XL / 3XL / 4XL / 5XL
 SIZES - Ladies S / M / L / XL / 2XL
 SIZES - Youth 5-6 / 7-8 / 9-10 / 11-12 / 13-14
 COLOURS Black, Navy.

Water repellent • Breathable • Windproof • 320g/m² 3 Layer bonded fabric comprising • Decorative stitch detail • Full front zip with chin guard • Inner storm flap • Front pockets • Open cuff • Integral hood • Fashionable shaped longer back panel • Microfleece inner provides extra warmth • Soft hi-stretch fabric & comfortable active cut • Reflective Strip on back of the jacket.

Youth: Reflective Strip on back and front pockets of the jacket • No pocket zips.

DECORATORS ACCESS POINTS: Open

DECORATION PROCESS: Embroidery. Direct Print, Transfer (not suitable for DTG)

COLOURS



BLACK NAVY



MENS

Sizes in CM

CM	S	M	L	XL	2XL	3XL	4XL	5XL	
CHEST	-	58	60	62	64	66	68	70	72
LENGTH	-	72	74	76	78	80	82	84	86

LADIES

Sizes in CM

CM	S(10)	M(12)	L(14)	XL(16)	2XL(18)	
CHEST	-	48	50	52	54	56
LENGTH	-	63	65	67	69	71

YOUTH

Sizes in CM

CM	XS(5-6)	S(7-8)	M(9-10)	L(11-12)	XL(13-14)
CHEST	35.5	38.5	41.5	44.5	48
LENGTH	48	52	56	60	64





R231M (MENS) / R231F (LADIES) - JACKET
CORE PRINTABLE SOFTSHELL JACKET

R232M (MENS) / R232F (LADIES) - VEST
CORE PRINTABLE SOFTSHELL VEST

FABRIC - Outer 280g/m² 2 Layer mechanical yarn comprising
 FABRIC - Inner 100% Polyester Microfleece
 SIZES - Mens S / M / L / XL / 2XL / 3XL / 4XL / 5XL
 SIZES - Ladies S / M / L / XL / 2XL
 COLOURS Black, Navy.

Showerproof • Breathable • Windproof • Decorative top stitch
 • Full front zip • Zipped front pockets • Chin guard • Elastane-free, crimped yarn stretch, easy to print fabric • Microfleece inner provides extra warmth • Ready to brand - cut away label • Elasticised bound cuff • Slim fashion fit.

DECORATORS ACCESS POINTS: Open

DECORATION PROCESS: Embroidery, Direct Print, Transfer (not suitable for DTG)

COLOURS



MENS R231M / R232M

Sizes in CM

CM		S	M	L	XL	2XL	3XL	4XL	5XL
CHEST	-	54	57	61	64	66	69	71	73
LENGTH	-	70	72	74	76	78	79	80	81

LADIES R231F / R232F

Sizes in CM

CM	S(10)	M(12)	L(14)	XL(16)	2XL(18)	3XL(20)
CHEST	50	52	55	57	59	61
LENGTH	64	65	66	67	68	69





COLOURS



R203X (ADULTS) / R203B (YOUTH)

CORE DRI-WARM & LITE JACKET

FABRIC - Outer Storm-Dri 210T PU Coated 100% Polyester
 FABRIC - Inner 100% Polyester 180g/m² Microfleece
 SIZES - Adults S / M / L / XL / 2XL / 3XL / 4XL / 5XL
 SIZES - Youth 5-6 / 7-8 / 9-10 / 11-12 / 13-14
 COLOURS Black, Navy, Red, Burgundy, Royal, Bottle
 * Mens 4XL-5XL available in Black & Navy only.

Waterproof (2000mm) • Lightweight • Windproof • Full length spiral zip • Microfleece collar facing • Zip side pockets with cargo retention welts • Fold away waterproof hood • Reflective tape back detail • Elasticated storm proof cuffs • Waterproof taped seams.

DECORATORS ACCESS POINTS: Lower back hem.
 DECORATION PROCESS: Transfer Print, Embroidery, Direct Print.

ADULTS								Sizes in CM	
CM	XS	S	M	L	XL	2XL	3XL	4XL	5XL
CHEST	-	62	65	67	70	72	75	77	80
LENGTH	-	75	77	79	81	83	85	87	89

YOUTH					Sizes in CM
CM	S(5-6)	M(7-8)	L(9-10)	XL(11-12)	2XL(13-14)
CHEST	44.5	48.5	51.5	54.5	57.5
LENGTH	56	60	64	68	72

*Sizing approximate conversion.



R204X (ADULTS)

CORE ADULT WINDCHEATER

FABRIC 190T 100% Polyester with AC coating.
 SIZES - Adults S / M / L / XL / 2XL
 COLOURS Black, Navy, Red, Royal, Bottle

Water repellent • Windproof • Lightweight • Vent panels • Concealed hood in collar with adjuster • Full front zip fastening • Zip closing right pocket • Open left pocket • Headphone cable holder located in right hand pocket • Elasticated cuffs • Extremely lightweight • Unlined.

DECORATORS ACCESS POINTS: One layer only.
 DECORATION PROCESS: Direct Print, Digital Transfer Print, Screen Print Transfer.

ADULTS							Sizes in CM		
CM	S	M	L	XL	2XL				
CHEST	-	61	64	66	69	71	-	-	
LENGTH	-	69	71	75	78	81	-	-	



COLOURS





R205X (ADULTS) CORE LIGHTWEIGHT JACKET

FABRIC - Outer 100% 190T Polyester StormDri 2000 PU coating
 FABRIC - Lining 70g/m² Breathable Poly mesh
 SLEEVE - Lining 100% Polyester
 SIZES - Adults S / M / L / XL / 2XL / 3XL / 4XL / 5XL
 COLOURS Black, Navy

Waterproof (2000mm) • Windproof • Breathable • Back and chest venting • Taped seams • Fold away and lightweight • Concealed hood in collar with adjuster • Full front zip fastening • 2 front zip closing pockets • Elasticated cuff • Fold away system into pocket • Adjustable shockcord hem.

DECORATORS ACCESS POINTS: Through open back hem.
DECORATION PROCESS: Embroidery, Transfer Print, Direct Print (Consult your decorator).

ADULTS Sizes in CM

CM	S	M	L	XL	2XL	3XL	4XL	5XL	
CHEST	-	61	64	66	69	71	73	76	76
LENGTH	-	69	71	75	78	81	84	87	90

COLOURS



BLACK NAVY



R226X (MENS) / R226B (YOUTH) RAIN TROUSERS

FABRIC 190T 100% Polyester with PVC coating
 SIZES - Adult S / M / L / XL / 2XL / 3XL / 4XL / 5XL
 SIZES - Youth 3-4 / 5-6 / 7-8 / 9-10 / 11-12
 COLOURS Black, Navy.

Waterproof 2000mm • Windproof • Elasticated waistband • Waist vents to access inner pockets • Adjustable snap closing ankles • Fully tape seams • Generous fit for over trousers.

DECORATORS ACCESS POINTS: Open
DECORATION PROCESS: Direct print, Digital Transfer Print

ADULT Sizes in CM

CM	S	M	L	XL	2XL	3XL	4XL	5XL
WAIST	-	57	60	63	65	68	70	74
INSIDE LEG	-	73	76	79	79	80	81	83

YOUTH Sizes in CM

CM	3-4	5-6	7-8	9-10	11-12
WAIST	43	45.5	48	50.5	53
INSIDE LEG	51	58	60	62	64

COLOURS



BLACK NAVY





R207X (ADULTS)

CORE WINTER PARKER

FABRIC - Outer 190T 100% Polyester, StormDri 2000 coating
 FABRIC - Lining 160g Polyester padding
 FABRIC - Inner 100% Polyester
 SIZES - Adults S / M / L / XL / 2XL / 3XL
 COLOURS Black, Navy

Waterproof (2000mm) • Windproof • Fully taped waterproof seams • Long fit design • High collar design with fleece lining • Concealed 3 panel fold-away adjustable hood in collar • Full front zip fastening with storm flap • Front pockets with storm flaps and fleece lining • Inner elasticised cuff & reflective cuff detail • Inside pockets • Adjustable drawcord hem • 2 front pockets • Zipped inside pocket.

DECORATORS ACCESS POINTS: Full hem and left chest
 DECORATION PROCESS: Embroidery, Direct print, Digital Transfer Print, Screen Print Transfer.

Sizes in CM

CM	S	M	L	XL	2XL	3XL	4XL	5XL
CHEST	- 58	62	66	70	74	78	82	86
LENGTH	- 81	84	87	90	93	96	98	100



COLOURS



BLACK NAVY

INTERCHANGEABLE CO-ORDINATES FOR ANY RESULT ZIP PULL STYLE. PERFECT FOR COLOUR SPECIFIC SOLUTION.

Features: Black cord • Coloured toggle • 100% Polyurethane, Tie: 100% Polyester Polyurethane tag with Polyester tie.

COLOURS



SAFETY GREEN WHITE ROYAL RED ORANGE PURPLE OCEAN BLUE LIME KELLY GREEN PINK FOREST GREEN BURGUNDY GREY





Result®



U15502 (ADULTS FASHION RANGE)

SNAP BACK TRUCKER (Adults)



FABRIC 60% Cotton, 40% Nylon
 SIZES - Adult One size fits all (Snapback)
 COLOURS White/Red, White/Black, White/Navy, Grey Melange, Black/Black.

5 Panel structured cap • 6 rows of stitching on visor • Elasticated sweatband • Double polysnap enclosure • Foam backing behind crown • Pre curved peak.

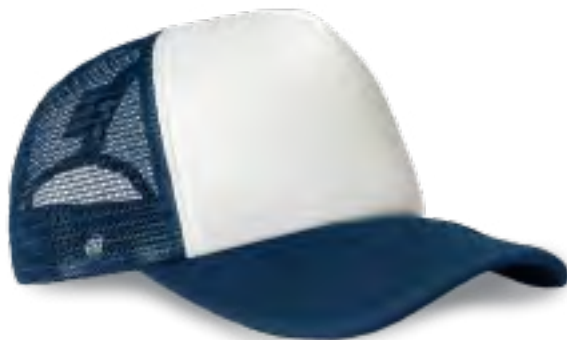
DECORATION PROCESS: Embroidery, Transfer.

COLOURS



KU15502 (KIDS FASHION RANGE)

SNAP BACK TRUCKER (Kids)

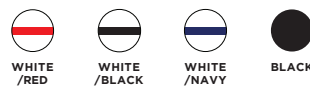


FABRIC 60% Cotton, 40% Nylon
 SIZES - Kids One size fits all (Snapback)
 COLOURS White/Red, White/Black, White/Navy, Black/Black.

5 Panel structured cap • 6 rows of stitching on visor • Elasticated sweatband • Double polysnap enclosure • Foam backing behind crown • Pre curved peak.

DECORATION PROCESS: Embroidery, Transfer.

COLOURS



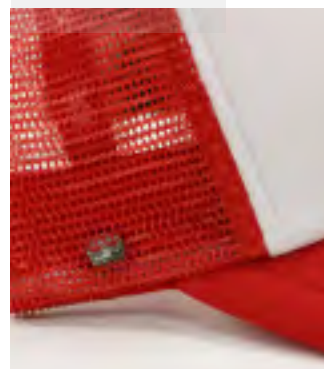
U15502 - Grey Melange
 80% Acrylic
 20% Wool



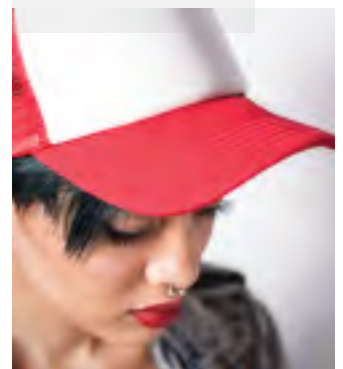
U15502 - Grey Melange
 Polysnap enclosure
 High quality trucker mesh



U15502 - Black
 60% Cotton
 40% Nylon



U15502 - White / Red
 6 rows of stitching on peak
 Pre curved peak





U15606 (ADULTS FASHION RANGE)
SNAP BACK 6 (Adults)

FABRIC 80% Acrylic, 20% Wool
 SIZES - Adult One size fits all (Snapback)
 COLOURS Black, Burgundy, Burgundy/Grey Peak, Camo, Charcoal Melange, Grey Melange, Grey/Black Peak, Navy, Red

6 Panel structured cap • 6 rows of stitching on visor • 4 needle twil sweatband • Double polysnap enclosure • Embroidered self colour eyelets • Yarn dyed buckram • Flat peak.

DECORATION PROCESS: Embroidery, Transfer.

COLOURS



KU15606 (KIDS FASHION RANGE)
SNAP BACK 6 (Kids)

FABRIC 80% Acrylic, 20% Wool
 SIZES - Adult One size fits all (Snapback)
 COLOURS Black, Grey Melange, Navy, Red

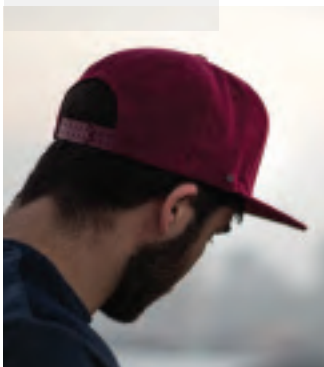
6 Panel structured cap • 6 rows of stitching on visor • 4 needle twil sweatband • Double polysnap enclosure • Embroidered self colour eyelets • Yarn dyed buckram • Flat peak.

DECORATION PROCESS: Embroidery, Transfer.

COLOURS



U15606 - Burgundy
 80% Acrylic
 20% Wool



U15606 - Charcoal Melange
 Metal Crown detail



U15606 - Charcoal Melange
 Double polysnap enclosure
 Embroidered self colour eyelets



U15606 - Navy
 6 panel structured cap
 Yarn dyed buckram





U15618 (ADULTS FASHION RANGE)
**HIGH TECH CURVED PEAK
 SNAPBACK** **NEW STYLE**

FABRIC 100% Polyester
 SIZES - Adult One size fits all
 COLOURS Black, Navy, Grey, White

6 Panel structured cap • 6 rows of stitching on visor • Pre curved peak • Polysnap enclosure • Metal self colour eyelets • Yarn dyed buckram • Back and side breathable mesh panels.

DECORATION PROCESS: Embroidery, Transfer.



U15518 (ADULTS FASHION RANGE)
**PRO STYLE 5 PANEL
 SNAPBACK** **NEW STYLE**

FABRIC 98% Cotton, 2% Spandex
 FABRIC - MELANGE 80% Acrylic, 20% Wool
 SIZES - Adult One size fits all (Snapback)
 COLOURS Black, Burgundy, Burgundy/Grey, Charcoal Melange, Grey Melange, Military Green, Navy, Light Pink, Red, Royal, White

5 Panel structured cap • 6 rows of stitching on visor • 4 needle twill sweatband • Double polysnap enclosure • Embroidered self colour eyelets • Yarn dyed buckram • Pre curved peak.

DECORATION PROCESS: Embroidery, Transfer.



U15518 - Military Green
 Polysnap enclosure
 Self colour eyelets





U15608 (ADULTS FASHION RANGE)
PRO STYLE SNAP BACK 6 (Adults)

FABRIC 98% Cotton, 2% Spandex
 FABRIC - MELANGE 80% Acrylic, 20% Wool
 FABRIC - ACTIVE 100% Polyester
 SIZES - Adult One size fits all (Snapback)
 COLOURS Active Grey Melange, Black, Active Pink Melange, Navy, Active Royal Melange, Red, Burgundy, Military Green, Light Pink, Royal, Burgundy/Grey, White, Charcoal Melange, Grey Melange

6 Panel structured cap • 6 rows of stitching on visor • 4 needle twil sweatband • Double polysnap enclosure • Embroidered self colour eyelets • Yarn dyed buckram • Pre curved peak.

DECORATION PROCESS: Embroidery, Transfer.

COLOURS



KU15608 (KIDS FASHION RANGE)
PRO STYLE SNAP BACK 6 (Kids)

FABRIC 98% Cotton, 2% Spandex
 FABRIC - MELANGE 80% Acrylic, 20% Wool
 SIZES - Adult One size fits all (Snapback)
 COLOURS Black, Grey Melange, Navy, Red

6 Panel structured cap • 6 rows of stitching on visor • 4 needle twil sweatband • Double polysnap enclosure • Embroidered self colour eyelets • Yarn dyed buckram • Pre curved peak.

DECORATION PROCESS: Embroidery, Transfer.

COLOURS



U15518 - Military Green
 6 Rows of stitching on peak
 Pre curved peak



U15608 - Grey Melange
 Double polysnap enclosure
 Embroidered self colour eyelets



U15608 - Grey Melange
 6 panel structured cap
 Yarn dyed buckram



U15607 (ADULTS FASHION RANGE)
FASHION 6



FABRIC 80% Acrylic, 20% Wool
 SIZES - Adult One size fits all (Snapback)
 COLOURS Black, Burgundy/Grey, Charcoal Melange, Burgundy, Khaki, Navy/Grey, White

6 Panel structured cap • 6 rows of stitching on visor • Double polysnap enclosure • Elasticated sweatband with jacquarded branding • Metal eyelets • Yarn dyed buckram • Flat peak.

DECORATION PROCESS: Embroidery, Transfer.



U15604 (ADULTS FASHION RANGE)
FLAT PEAK



FABRIC 83% Acrylic, 15% Wool, 2% Spandex
 SIZES - Adult S/M - 56cm, L/XL - 58cm, 2XL - 60cm
 COLOURS Black, Grey Melange, Charcoal Melange

6 Panel structured cap • 6 rows of stitching on visor • Fitted stretch enclosure • Elasticated sweatband with jacquarded branding • Nylon Buckram • Flat peak.

DECORATION PROCESS: Embroidery, Transfer.

Sizes in CM

CM	S/M	L/XL	2XL
HEAD CIR.	56	58	60

COLOURS



U15604 - Charcoal Melange
 83% Acrylic
 15% Wool
 2% Spandex



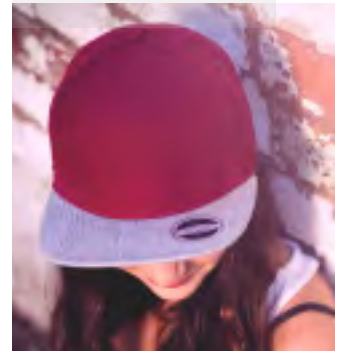
U15604 - Charcoal Melange
 Metal Crown detail
 Metal eyelets



U15607 - Navy / Grey
 Contrast Peak
 40% Nylon



U15607 - Burgundy / Grey
 No centre seam on front panel for decorating





U15603 (ADULTS FASHION RANGE)

PRO STYLE 6 PANEL (Adults)

FABRIC 98% Cotton, 2% Spandex
 FABRIC - MELANGE 83% Acrylic, 15% Wool, 2% Spandex
 SIZES - Adult S/M - 56cm, L/XL - 58cm, 2XL - 60cm
 COLOURS Black, Charcoal Melange, Grey Melange, Navy, Red, Royal, White

6 Panel structured cap • 6 rows of stitching on visor • Fitted stretch enclosure • Elasticated sweatband with jacquarded branding • Cotton Buckram • Pre curved peak.

DECORATION PROCESS: Embroidery, Transfer.

Sizes in CM

CM	S/M	L/XL	2XL
HEAD CIR.	56	58	60



COLOURS



KU15603 (KIDS FASHION RANGE)

PRO STYLE 6 PANEL (Kids)

FABRIC 98% Cotton, 2% Spandex
 FABRIC - MELANGE 83% Acrylic, 15% Wool, 2% Spandex
 SIZES - Adult S/M - 52cm, L/XL - 54cm
 COLOURS Black, Charcoal Melange, Grey Melange, Navy, Red

6 Panel structured cap • 6 rows of stitching on visor • Fitted stretch enclosure • Elasticated sweatband with jacquarded branding • Cotton Buckram • Pre curved peak.

DECORATION PROCESS: Embroidery, Transfer.

Sizes in CM

CM	S/M	L/XL
HEAD CIR.	52	54

COLOURS



U15603 - Royal
 Fitted stretch enclosure
 6 Panel structure



U15603 - Royal
 Metal UFlex Badge
 Cotton buckram







HEADWEAR24
GLOBAL MANUFACTURERS

6009 (SUPERIOR RANGE)

6 PANEL BRUSHED COTTON

FABRIC Brushed Cotton
 SIZES - Kids One size fits all (Velcro enclosure)
 COLOURS White, Navy, Yellow, Lime, Orange, Emerald, Pink, Bottle, Red, Stone, Burgundy, Khaki, Purple, Chocolate, Sky, Grey, Royal, Black

6 Panel structured cap (Cotton buckram) • Weight: 72x44 • Grams: 265g/m² • 2 needle stitch poplin sweatband • Embroidered self colour eyelets • Self fabric Velcro enclosure to accommodate adjustability • Pre curved peak.

DECORATION PROCESS: Embroidery, Transfer.

COLOURS



K001 (KIDS RANGE)

KIDS 6 PANEL CAP

FABRIC Heavy Brushed Cotton Twill
 SIZES - Adult One size fits all (Velcro enclosure 51 - 57cm)
 COLOURS White, Navy, Pink, Bottle, Red, Stone, Sky, Chocolate, Royal, Black

5 Panel structured cap (Nylon buckram) • Weight: 105x58 • Grams: 185g/m² • Nylon mesh back panels • Poly snap back enclosure • Pre-curved peak.

DECORATION PROCESS: Embroidery, Transfer.

COLOURS



6009 - Emerald
 2 needle stitch poplin sweatband



K001 - Pink
 2 needle stitch poplin sweatband





V6009 (VALUE RANGE)

6 PANEL BRUSHED COTTON

FABRIC Brushed Cotton
 SIZES - Adults One size fits all (Velcro enclosure, 53 - 60cm)
 COLOURS Black, Navy

6 Panel structured cap (Cotton buckram) • Weight: 72x44 • Grams: 265g/m² • 2 needle stitch poplin sweatband • Embroidered self colour eyelets • Self fabric Velcro enclosure to accommodate adjustability • Pre curved peak.

DECORATION PROCESS: Embroidery, Transfer.



M6001 (ADULTS FASHION RANGE)

METAL SANDWICH PEAK

FABRIC Heavy Brushed Cotton Twill
 SIZES - Adult One size fits all (Self fabric enclosure metal buckle)
 COLOURS White/Black, Khaki/Black, Red/White, Red/Black, Chocolate/Stone, Charcoal/Stone, Royal/Red, Black/White, Navy/White, Black/Yellow, Bottle/Yellow, Black/Red, Stone/Navy

6 Panel structured cap (Cotton buckram) • Weight: 72x44 • Grams: 265g/m² • Contrast sandwich trim • Embroidered self colour eyelets • Gun metal buckle and tuck in return to accommodate adjustability • Pre curved peak.

DECORATION PROCESS: Embroidery, Transfer.



V6009 - Black
 Self colour and fabric eyelets
 6 panel structure

M6001 - Black / White
 Gun metal buckle and tuck in return





S12607 (ADULTS FASHION RANGE)
SNAP BACK ORIGINAL

FABRIC 100% Acrylic
 SIZES - Adult One size fits all (Snapback)
 COLOURS White, Red, Navy, Heather Grey, Black

6 Panel structured cap (Nylon buckram) • Weight: 74x44 • 4 needle stitch cotton twill sweatband • Embroidered self colour eyelets • Polysnap enclosure • Flat peak.

DECORATION PROCESS: Embroidery, Transfer.

COLOURS



S12608 (ADULTS FASHION RANGE)
SNAP BACK 2 TONE

FABRIC 100% Acrylic
 SIZES - Adult One size fits all (Snapback)
 COLOURS White/Black, Bottle/White, Grey/Black, Black/Red

6 Panel structured cap (Nylon buckram) • Weight: 74x44 • 4 needle stitch cotton twill sweatband • Embroidered self colour eyelets • Polysnap enclosure • Flat peak.

DECORATION PROCESS: Embroidery, Transfer.



S12608 - Bottle / White
 100% Acrylic
 6 Panel Structured Cap

5003 (ADULTS FASHION RANGE) MAC TRUCKER



FABRIC Cotton Twill front panel, Nylon mesh, Nylon buckram
SIZES - Adult One size fits all (Snapback)
COLOURS Red/White, Royal/White, Navy/White, Black/White, Black/Black, White/Black

5 Panel structured cap (Nylon buckram) • Weight: 105x58 • Grams: 185g/m² • Nylon mesh back panels • Polysnap back enclosure • Pre-curved peak.

DECORATION PROCESS: Embroidery, Transfer.

COLOURS



6027 (HUNTER RANGE) CAMO HUNTER



FABRIC 55/45 Cotton/Polyester
SIZES - Adults One size fits all (Velcro Back)
COLOURS Camo

Camo printed cotton twill • Embroidered self colour eyelets • Pre-curved peak • Velcro back • Grams: 185g/m².

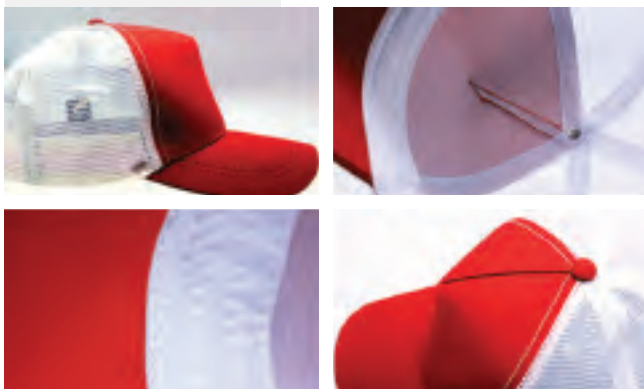
DECORATION PROCESS: Embroidery, Transfer.

COLOURS



5003 - Red / White

Nylon mesh side and back panels



6027 - Camo

Camo printed cotton twill



6033A (BRIM RANGE)

BUCKET HAT

FABRIC 65/35 Poly/Cotton

SIZES - Adults S - 55cm, M - 57cm, L - 59cm, XL - 61cm

COLOURS White, Royal, Yellow, Navy, Red, Bottle, Maroon, Black, Gold

Draw-cord with slide toggle • Embroidered self colour eyelets • Grams: 185g/m² • Brim width: 65mm.

DECORATION PROCESS: Embroidery, Transfer.

CM	S	M	L	XL
HEAD CIR.	55	57	59	61

COLOURS



6044 (BRIM RANGE)

SANDWICH BUCKET HAT

FABRIC 55/45 Cotton/Polyester

SIZES - Adults S - 55cm, M - 57cm, L - 59cm, XL - 61cm

COLOURS White/White, White/Black, Navy/Blue, Navy, Khaki/Black, Red/White, Burgundy, Black/Red, Black/White, Black

Microfibre • Embroidered self colour eyelets • 8 rows of stitching on visor • Contrast sandwich trim • Brim width: 65mm • Cotton sweatband and lining.

DECORATION PROCESS: Embroidery, Transfer.

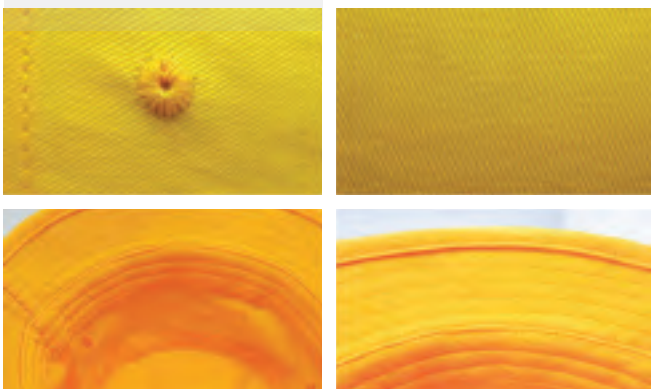
CM	S	M	L	XL
HEAD CIR.	55	57	59	61

COLOURS



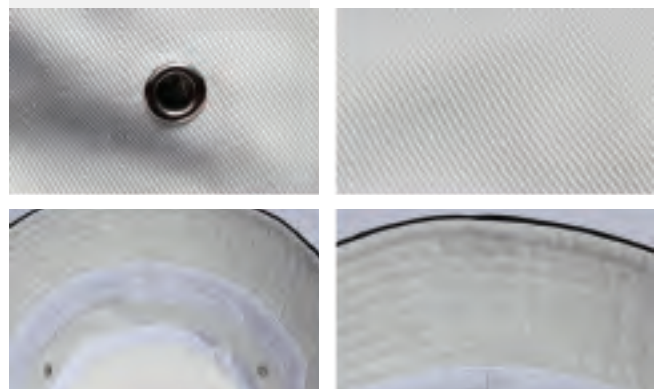
6033A - Gold

Embroidered self colour eyelets
Brim width: 65mm



6044 - White / Black

Metal eyelets
Brim width: 65mm



S6048 (BRIM RANGE)

SAFARI WIDE BRIM HAT

FABRIC 65/35 Poly/Cotton
 SIZES - Adults S - 55cm, M - 57cm, L - 59cm, XL - 61cm
 COLOURS White, Royal, Yellow, Navy, Red, Bottle, Maroon, Black

Draw-cord with slide toggle • Brass eyelets and studs • 4 Needle stitch twill sweatband • Brim width: 60mm • Printable area: 90mm x 50mm • Floats on water.

DECORATION PROCESS: Embroidery, Transfer.

CM	S	M	L	XL
HEAD CIR.	55	57	59	61

COLOURS



6055 (BRIM RANGE)

MICROFIBRE BUCKET HAT

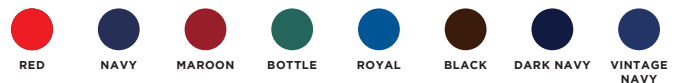
FABRIC Microfibre
 SIZES - Adults S - 55cm, M - 57cm, L - 59cm, XL - 61cm
 COLOURS Red, Navy, Maroon, Bottle, Royal, Black

Microfibre • Embroidered self colour eyelets • 8 rows of stitching on visor • Elastic draw-cord around crown with slide toggle • Brim width: 65mm • Cotton sweatband and lining.

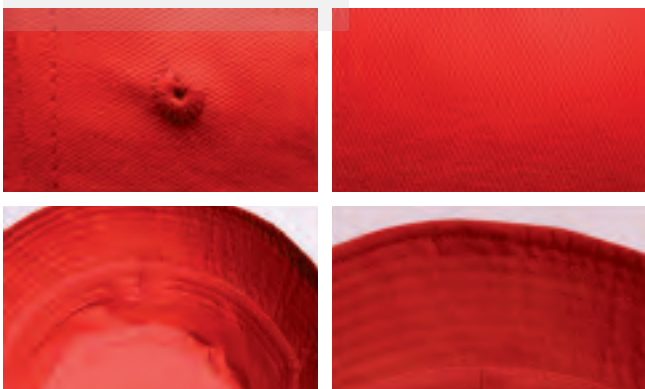
DECORATION PROCESS: Embroidery, Transfer.

CM	S	M	L	XL
HEAD CIR.	55	57	59	61

COLOURS



S6048 - Red
 4 Needle stitch twill sweatband
 Floats on water



6055 - Navy
 Slide toggle
 Cotton sweatband





6056 (PERFORMANCE RANGE)
PERFORMER

FABRIC Polymicrofibre/Polymesh
 SIZES - Adults One size fits all
 COLOURS White/Black, Navy/White, Red/White, Black/White, Royal/White, Red/Black

Tonal mesh detail • 4 Needle stitch poplin sweatband • Reflective panel detail • Unstructured • Self fabric velcro enclosure to accommodate adjustability.

DECORATION PROCESS: Embroidery, Transfer.

COLOURS



6609 (ATHLETE RANGE)
POLY/COTTON FADE RESISTANT CAP **NEW STYLE**

FABRIC 65/35 Poly/Cotton
 SIZES - Adults One size fits all
 COLOURS Black, Navy, Dark Navy, Royal, Red

Fade resistant • Sporty look • Elastic fastening • Anti-fade • 5 Colours available •

DECORATION PROCESS: Embroidery, Laser engraved patch

COLOURS



6056 - Red / White
 Reflective panel detail
 Tonal mesh detail



S15502 (ATHLETE RANGE)

ATHLETE ELASTIC VISOR **NEW STYLE**

FABRIC 100% Polyester
 SIZES - Adults One size fits all
 COLOURS Black, Navy, Red, Royal

Elasticated strap • Terry sweatband • 4 Colours available • 100% Poly micro-mesh • Pre curved peak • Sporty look • Anti-fade.

DECORATION PROCESS: Embroidery, Laser engraved patch

COLOURS



BLACK NAVY RED ROYAL



S16052 (ATHLETE RANGE)

ATHLETE 6 PANEL CAP **NEW STYLE**

FABRIC 100% Polyester
 SIZES - Adults One size fits all
 COLOURS Black, Navy, Red, Royal

6 Panel structured cap • 4 Colours available • Embroidered self colour eyelets • Self fabric Velcro closure to accommodate adjustability • Pre curved peak • Sporty look • Anti-fade.

DECORATION PROCESS: Embroidery, Laser engraved patch

COLOURS



BLACK NAVY RED ROYAL





B003 (COLD FORCE RANGE)

CABLE KNIT FLEECE BEANIE

FABRIC 100% Acrylic knit
 SIZES - Adults One size fits all
 COLOURS Black, Navy

2 Colours available • Fleece Lined • One size fits all.

DECORATION PROCESS: Embroidery, Laser engraved patch

COLOURS



BLACK NAVY



5002 (COLD FORCE RANGE)

SKULL BEANIE

FABRIC 100% Acrylic knit
 SIZES - Adults One size fits all
 COLOURS Black, Navy, Charcoal Melange, Grey Melange

Fold up band • 4 Colours available

DECORATION PROCESS: Embroidery, Laser engraved patch

COLOURS



BLACK NAVY CHARCOAL MELANGE GREY MELANGE



B001 (COLD FORCE RANGE)

CUFFED KNITTED BEANIE

FABRIC 100% Acrylic knit
 SIZES - Adults One size fits all
 COLOURS White, Bottle, Red, Grey Melange, Sky, Charcoal, Royal, Charcoal Melange, Navy, Black, Safety Yellow, Safety Orange

Fold up band • 12 Colours available • One size fits all.

DECORATION PROCESS: Embroidery, Laser engraved patch

COLOURS



WHITE BOTTLE RED GREY MELANGE SKY CHARCOAL
 ROYAL CHARCOAL MELANGE NAVY BLACK SAFETY YELLOW SAFETY ORANGE



PREMI SUB

SUBLIMATION SPECIALIST

PREM SUB

SUBLIMATION SPECIALIST

Things to know about PREM-SUB:

Dye Sublimation is a process of printing fabric that provides the best quality, and most durable printing option for complex designs. In sublimation, the inks are fused into the fabric as opposed to sitting on top of the fabric such as in DTG or screen printing. The process not only gives fabrics a softer touch after the printing, but it is also very durable. The colour remains strong in outdoor lighting and after extensive washing, so it's the ideal process for sportswear and school clothing.

PRODUCTION LEAD TIME: Allow 4 weeks + 1 week Air freight

PREPRODUCTION SAMPLE: 2 weeks + 1 week Air freight. Sample fee is \$80.00 + GST per sample and refunded with an order quantity of 50+.

RUSH JOB: Allow 2-3 weeks + 1 week Air freight. Please note: An additional fee of \$5.00 per garment applies.

All freight charges are included in the products individual cost.

DESIGN YOUR TEAM SPORTS UNIFORM ON OUR ONLINE KITBUILDER

VISIT OUR WEBSITE
WWW.PREMSUB.CO.NZ
FOR MORE...

SPECIALTY FABRICS
 A collection of specialty fabrics with purpose built functions

FABRIC NAME	ANTI-MICROBIAL	MOISTURE WICK	PICK/RUB RESISTANCE	BREATH-ABILITY	HOR...
Birdeye Mesh	10	9	6	9	7
Milk Mesh	10	9	6	9	7
Mesh 130 ^{gsm}	10	8	6	9	7
Mesh 200 ^{gsm}	10	9	8	7	10
Plum Mesh	10	9	8	7	10
Waffle	10	9	9	10	10
Pinhole	10	9	9	10	10

INTERLOCK

Color swatches: REFLEX BLUE, ORANGE, CREAM, FLESH, SAND, GOLD, BOBS GOLD, CHAMPAGNE, PURPLE, RED, YELLOW, BLACK.

OFF - FIELD



Adults Pullover Hoodie pictured

PULLOVER / FULL ZIP HOODIE

FABRIC - 230gsm Fleece
 CODE - Pullover - **PS-01100** (Adult) / **PS-01110** (Youth)
 Full Zip - **PS-01120** (Adult) / **PS-01130** (Youth)
 SIZING - Adult: S - 5XL / Youth: YS - YXL
 COLLAR - Hooded

Additional Information: Offered in both a pullover and full zip design • Adjustable drawstring neck, large centre pocket and self-fabric cuffs • Outstanding comfort, durability and range of motion • Optional polar fleece liner for 4-season comfort.

		Sizes in CM								
ADULT	CM	XS	S	M	L	XL	2XL	3XL	4XL	5XL
	CHEST	-	52	56	60	65	70	75	80	85
	LENGTH	-	67	69	71	73	75	77	79	81
YOUTH	CM	YXS (Y6)	YS (Y8)	YM (Y10)	YL (Y12)	YXL (Y14)				
	CHEST	42	44	46	48	50				
	LENGTH	50	52	56	60	64				



Adults Training Sleeveless Hoodie pictured

TRAINING LS / SLEEVELESS HOODIE

FABRIC - 190gsm Interlock
 CODE - Long Sleeve - **PS-01160** (Adult) / **PS-01170** (Youth)
 Sleeveless - **PS-01140** (Adult) / **PS-01150** (Youth)
 SIZING - Adult: S - 5XL / Youth: YXS - YXL
 COLLAR - Hooded

Additional Information: Great styling like our heavyweight hoodies in a lightweight design • Suited for both inside and outside use • Offered in both a traditional long sleeve design as well as a sleeveless • Cross between a traditional hoodie and a t-shirt • feature large centre pockets and double-sided hood sublimation.

		Sizes in CM								
ADULT	CM	XS	S	M	L	XL	2XL	3XL	4XL	5XL
	CHEST	-	53.5	56	58.5	62	66	68.5	71	73.5
	LENGTH	-	75	77.5	80	83	85	87.5	90	92
YOUTH	CM	YXS (Y6)	YS (Y8)	YM (Y10)	YL (Y12)	YXL (Y14)				
	CHEST	37	39.5	42	45.5	49.5				
	LENGTH	46	49.5	56.5	61.5	66.5				



Adults Qtr. Zip Pullover pictured

QTR. ZIP PULLOVER

FABRIC - 225gsm Terry
 CODE - **PS-01180** (Adult) / **PS-01190** (Youth)
 SIZING - Adult: S - 5XL / Youth: YS - YXL
 COLLAR - Hooded

Additional Information: Stylish and comfortable • 1/4 zip front design with neck protector on zipper • Flat lock stitching and binding trim on all openings • Short and long sleeve version available • Great basketball shooting shirt, warm up or baseball cage jacket.

		Sizes in CM								
ADULT	CM	XS	S	M	L	XL	2XL	3XL	4XL	5XL
	CHEST	-	53.5	56	58.5	62	66	68.5	70.5	72.5
	LENGTH	-	71	73.5	76	78.5	81	83.5	86	88
YOUTH	CM	YXS (Y6)	YS (Y8)	YM (Y10)	YL (Y12)	YXL (Y14)				
	CHEST	37	39.5	42	45.5	49.5				
	LENGTH	46	49.5	54	58.5	63.5				



WARM UP JACKET / PANTS

FABRIC - Jacket - 230gsm Fleece
Pants - 270gsm Interlock
CODE - Jacket - PS-01200 (Adult) / PS-01210 (Youth)
Pants - PS-01220 (Adult) / PS-01230 (Youth)
SIZING - Adult: S - 5XL / Youth: YS - YXL
COLLAR - Standard Turtle Neck

Additional Information: Warm Up Suits are traditionally styled warm up jacket and pants offered in adults and youth • Jacket features full length zipper with neck protector, side pockets and self-cuff • The pants feature both a full sublimation and hybrid design • Pants feature a 4-way stretch mesh insert in upper back area for flexibility and breath-ability.

		WARM UP JACKET								Sizes in CM
ADULT	CM	XS	S	M	L	XL	2XL	3XL	4XL	5XL
	CHEST	-	52	56	60	65	70	75	80	-
	LENGTH	-	67	69	71	73	75	77	79	-
YOUTH	CM	YXS (Y6)	YS (Y8)	YM (Y10)	YL (Y12)	YXL (Y14)				
	CHEST	42	44	46	48	50				
	LENGTH	50	52	56	60	64				
		WARM UP PANT								Sizes in CM
ADULT	CM	XS	S	M	L	XL	2XL	3XL	4XL	5XL
	1/2 HIP	-	51	54	57	61	64	67	70	73
	OUTSEAM	-	104	106	109	112	114	116	118	120
YOUTH	CM	YXS (Y6)	YS (Y8)	YM (Y10)	YL (Y12)	YXL (Y14)				
	1/2 HIP	42	44	46	50	52				
	OUTSEAM	72	75	83	90	98				

Adults Warm Up Jacket and Pants pictured



QTR. / FULL ZIP HYBRID HOODIE

FABRIC - 230gsm Fleece + Hybrid
CODE - Qtr. Zip - PS-01240 (Adult) / PS-01250 (Youth)
Full Zip - PS-01260 (Adult) / PS-01270 (Youth)
SIZING - Adult: S - 5XL / Youth: YS - YXL
COLLAR - Hooded

Additional Information: Economical alternative to our fully sublimated hoodies • Available in full zip and 1/4 zip • Adjustable drawstring hood, zippered pockets and thumb holes • Combined pre-dyed fabric in 3 available colours with sublimated • **Note:** Front upper panel, hood lining and hood accent are the only sublimated areas.

		SIZES IN CM								
ADULT	CM	XS	S	M	L	XL	2XL	3XL	4XL	5XL
	CHEST	-	52	56	60	65	70	74	78	82
	LENGTH	-	71	73	75	77	79	81	83	85
YOUTH	CM	YXS (Y6)	YS (Y8)	YM (Y10)	YL (Y12)	YXL (Y14)				
	CHEST	42	44	46	48	50				
	LENGTH	54	56	60	64	68				

Adults Qtr. Zip Hybrid pictured



WOVEN SHIRT

FABRIC - Lightweight Woven
CODE - Shirt - PS-01460 (Adult) / PS-01470 (Youth)
SIZING - Adult: S - 4XL / Ladies: L6 - L16
COLLAR - Polo

Additional Information: Traditional corporate impression woven short sleeve shirt • Great for corporate uniforms, Darts league and bowling • Offered in mens and ladies cut • Exceptional woven fabric • Available in long sleeve.

		SIZES IN CM								
ADULT	CM	XS	S	M	L	XL	2XL	3XL	4XL	5XL
	CHEST	-	55	58	62	65.5	71	76.5	81.5	-
	LENGTH	-	77	81	83	87	88	90.5	91	-
LADIES	CM	XS (L6)	S (L8)	M (L10)	L (L12)	XL (L14)	2XL (L16)	3XL (L18)	4XL (L20)	5XL (L22)
	CHEST	50.5	53	55.5	58	60.5	63	-	-	-
	LENGTH	75	75.5	77.5	79.5	81.5	83.5	-	-	-

Adults Woven Shirt pictured

T-SHIRT / LONG SLEEVE RAGLAN



FABRIC - 165gsm Waffle
 CODE - T-Shirt - PS-01280 (Adult) / PS-01290 (Youth) / PS-01300 (Ladies)
 Long Sleeve - PS-01310 (Adult) / PS-01320 (Youth) / PS-01330 (Ladies)
 SIZING - Adult: XS - 5XL / Youth: YXS - YXL / Ladies: L8 - L24
 COLLAR - Round Neck, V-Neck, Polo

Additional Information: Raglan build t-shirt and long sleeve tee offered in mens, ladies and youth sizes • Choice of three collars; Round Neck, V-Neck and Polo • Moisture wicking and anti-microbial fabric • Available in different fabrics.

Sizes in CM

ADULT	CM	XS	S	M	L	XL	2XL	3XL	4XL	5XL
	CHEST	52	52	56	58	60	63	66	69	71
	LENGTH	70	70	72	74	76	78	80	82	84
YOUTH	CM	YXS (Y6)	YS (Y8)	YM (Y10)	YL (Y12)	YXL (Y14)				
	CHEST	38	40	42	44	46				
	LENGTH	53	56	59	62	65				
LADIES	CM	LS (L8)	LM (L10)	LL (L12)	LXL (L14)	L2XL (L16)	L3XL (L18)	L4XL (L20)	L5XL (L22)	L6XL (L24)
	CHEST	44	47	50	53	56	59	62	64	66
	LENGTH	64	67	69	71	74	77	80	82	84

Adults Raglan Crew Neck pictured

T-SHIRT / LONG SLEEVE SET SLEEVE



FABRIC - 165gsm Waffle
 CODE - T-Shirt - PS-01340 (Adult) / PS-01350 (Youth) / PS-01360 (Ladies)
 Long Sleeve - PS-01370 (Adult) / PS-01380 (Youth) / PS-01390 (Ladies)
 SIZING - Adult: XS - 5XL / Youth: YXS - YXL / Ladies: L8 - L24
 COLLAR - Round Neck, V-Neck, Polo

Additional Information: Set Sleeve build t-shirt and long sleeve tee offered in mens, ladies and youth sizes • Choice of three collars; Round Neck, V-Neck and Polo • Moisture wicking and anti-microbial fabric • Available in different fabrics.

Sizes in CM

ADULT	CM	XS	S	M	L	XL	2XL	3XL	4XL	5XL
	CHEST	52	52	56	58	60	63	66	69	71
	LENGTH	70	70	72	74	76	78	80	82	84
YOUTH	CM	YXS (Y6)	YS (Y8)	YM (Y10)	YL (Y12)	YXL (Y14)				
	CHEST	38	40	42	44	46				
	LENGTH	53	56	59	62	65				
LADIES	CM	LS (L8)	LM (L10)	LL (L12)	LXL (L14)	L2XL (L16)	L3XL (L18)	L4XL (L20)	L5XL (L22)	L6XL (L24)
	CHEST	44	47	50	53	56	59	62	64	66
	LENGTH	64	67	69	71	74	77	80	82	84

Adults Longsleeve T-Shirt pictured

SINGLET / RACERBACK SINGLET



FABRIC - 165gsm Waffle
 CODE - Singlet - PS-01400 (Adult) / PS-01410 (Youth) / PS-01420 (Ladies)
 Racerback - PS-01430 (Adult) / PS-01440 (Youth) / PS-01450 (Ladies)
 SIZING - Adult: XS - 5XL / Youth: Y6 - Y14 / Ladies: L8 - L24
 COLLAR - Round Neck, V-Neck

Additional Information: Relaxed fitted singlet with basic two panel construction • Available in both V-Neck and classic Round Neck • Mens and Ladies specific cut • Stylish and comfortable • Complete range of motion and enhanced ventilation.

Sizes in CM

ADULT	CM	XS	S	M	L	XL	2XL	3XL	4XL	5XL
	CHEST	49	54	56	58	60	63	66	69	71
	LENGTH	68	70	72	74	76	78	80	82	84
YOUTH	CM	YXS (Y6)	YS (Y8)	YM (Y10)	YL (Y12)	YXL (Y14)				
	CHEST	38	40	42	44	46				
	LENGTH	53	56	59	62	65				
LADIES	CM	LS (L8)	LM (L10)	LL (L12)	LXL (L14)	L2XL (L16)	L3XL (L18)	L4XL (L20)	L5XL (L22)	L6XL (L24)
	CHEST	44	46	48	50	52	54	56	58	60
	LENGTH	60	62	64	66	68	70	72	74	76

Ladies V-Neck Standard Singlet pictured

BASEBALL / SOFTBALL

FULL BUTTON JERSEY / SLEEVELESS



FABRIC - 180gsm Pinhole Mesh
 CODE - Jersey - PS-02100 (Adult) / PS-02110 (Youth) / PS-02120 (Ladies)
 Sleeveless Jersey - PS-02130 (Adult) / PS-02140 (Youth) / PS-02150 (Ladies)
 SIZING - Adult: S - 3XL / Youth: YS - YXL / Ladies: LXS - L3XL
 COLLAR - Standard Baseball Neck

Additional Information: Traditional Baseball playing top available in Short Sleeve and Sleeveless • High degree of moisture management and ventilation • Increased level of comfort, range of motion and durability • Optional sublimated twill numbers are available.

Sizes in CM

ADULT	CM	XS	S	M	L	XL	2XL	3XL	4XL	5XL
	CHEST	-	52	55	60	65	70	75	-	-
	LENGTH	-	75	78	80	82	85	88	-	-
YOUTH	CM	YXS (Y6)	YS (Y8)	YM (Y10)	YL (Y12)	YXL (Y14)				
	CHEST	-	42.5	45	47.5	50				
	LENGTH	-	60.5	64.5	68.5	73.5				
LADIES	CM	LXS (L6)	LS (L8)	LM (L10)	LL (L12)	LXL (L14)	L2XL (L16)	L3XL (L18)	L4XL (L20)	L5XL (L22)
	CHEST	40	45	50	55	60	66	70	-	-
	LENGTH	66	72	74	76	78	80	82	-	-

Ladies Full Button Playing Jersey pictured

2-BUTTON JERSEY / SLEEVELESS



FABRIC - 180gsm Pinhole Mesh
 CODE - Jersey - PS-02160 (Adult) / PS-02170 (Youth) / PS-02180 (Ladies)
 Sleeveless Jersey - PS-02190 (Adult) / PS-02200 (Youth) / PS-02210 (Ladies)
 SIZING - Adult: S - 3XL / Youth: YS - YXL / Ladies: LXS - L3XL
 COLLAR - Standard Baseball Neck

Additional Information: Traditional Baseball playing top available in Short Sleeve and Sleeveless • High degree of moisture management and ventilation • Increased level of comfort, range of motion and durability • Optional sublimated twill numbers are available.

Sizes in CM

ADULT	CM	XS	S	M	L	XL	2XL	3XL	4XL	5XL
	CHEST	-	52	55	60	65	70	75	-	-
	LENGTH	-	75	78	80	82	85	88	-	-
YOUTH	CM	YXS (Y6)	YS (Y8)	YM (Y10)	YL (Y12)	YXL (Y14)				
	CHEST	-	42.5	45	47.5	50				
	LENGTH	-	60.5	64.5	68.5	73.5				
LADIES	CM	LXS (L6)	LS (L8)	LM (L10)	LL (L12)	LXL (L14)	L2XL (L16)	L3XL (L18)	L4XL (L20)	L5XL (L22)
	CHEST	39	45	50	55	60	66	70	-	-
	LENGTH	72	72	75	77	78	80	82	-	-

Mens 2-Button Playing Jersey pictured

TRADITIONAL T-SHIRT



FABRIC - 180gsm Pinhole
 CODE - PS-02320 (Adult) / PS-02330 (Youth) / PS-02340 (Ladies)
 SIZING - Adult: S - 3XL / Youth: YS - YXL / Ladies: LXS - L3XL
 COLLAR - Round Neck, V-Neck

Additional Information: Traditional Baseball playing T-shirt available in Full button, Round Neck and V-Neck • High degree of moisture management and ventilation • Increased level of comfort, range of motion and durability • Optional sublimated twill numbers are available.

		Sizes in CM									
ADULT	CM	XS	S	M	L	XL	2XL	3XL	4XL	5XL	
	CHEST	-	52	55	60	65	70	75	-	-	
	LENGTH	-	75	78	80	82	85	88	-	-	
YOUTH	CM	YXS (Y6)	YS (Y8)	YM (Y10)	YL (Y12)	YXL (Y14)					
	CHEST	-	42.5	45	47.5	50					
	LENGTH	-	60.5	64.5	68.5	73.5					
LADIES	CM	LXS (L6)	LS (L8)	LM (L10)	LL (L12)	LXL (L14)	L2XL (L16)	L3XL (L18)	L4XL (L20)	L5XL (L22)	
	CHEST	40	45	50	55	60	66	70	-	-	
	LENGTH	66	72	74	76	78	80	82	-	-	

Mens Traditional T-Shirt pictured

FULL LENGTH PANTS / HYBRID



FABRIC - 270gsm Interlock
 CODE - Pants - PS-02220 (Adult) / PS-02230 (Youth)
 Hybrid Pants - PS-02240 (Adult) / PS-02250 (Youth)
 SIZING - Adult: S - 3XL / Youth: YS - YXL
 WAIST - Elastic anti-slip waistband / 2 back pockets / Belt loops / Reinforced knees.

Additional Information: Full length baseball pant made from durable and comfortable heavyweight Interlock fabric • Back pockets • Reinforced knees for sliding • Silicone anti-slip waistband • Available in full sublimation and hybrid version • Side sewn stripe to accentuate design on full sublimation pant.

		Sizes in CM									
ADULT	CM	XS	S	M	L	XL	2XL	3XL	4XL	5XL	
	1/2 HIP	-	52	55	58	63	66	69	-	-	
	OUTSEAM	-	102	105	108	111	114	118	-	-	
YOUTH	CM	YXS (Y6)	YS (Y8)	YM (Y10)	YL (Y12)	YXL (Y14)					
	1/2 HIP	-	39	42	45	49					
	OUTSEAM	-	80	84	89	93					

Mens Full Length Pants pictured

THREE QTR. PANTS / HYBRID



FABRIC - 270gsm Interlock
 CODE - Pants - PS-02260 (Adult) / PS-02270 (Youth) / PS-02280 (Ladies)
 Hybrid Pants - PS-02290 (Adult) / PS-02300 (Youth) / PS-02310 (Ladies)
 SIZING - Adult: S - 3XL / Youth: YS - YXL / Ladies: LXS - L3XL
 WAIST - Elastic anti-slip waistband / 2 back pockets / Belt loops / Reinforced knees.

Additional Information: 3/4 baseball pant made from durable and comfortable heavyweight Interlock fabric • Back pockets • Reinforced knees for sliding • Silicone anti-slip waistband • Available in full sublimation and hybrid version • Side sewn stripe to accentuate design on full sublimation pant.

		Sizes in CM									
ADULT	CM	XS	S	M	L	XL	2XL	3XL	4XL	5XL	
	1/2 HIP	40	42	44	46	48	50	52	-	-	
	OUTSEAM	64	65	66	66	67	68	70	-	-	
YOUTH	CM	YXS (Y6)	YS (Y8)	YM (Y10)	YL (Y12)	YXL (Y14)					
	1/2 HIP	-	33	36	39	42					
	OUTSEAM	-	54	57	61	63					
LADIES	CM	LXS (L6)	LS (L8)	LM (L10)	LL (L12)	LXL (L14)	L2XL (L16)	L3XL (L18)	L4XL (L20)	L5XL (L22)	
	1/2 HIP	45	47	49	52	55	58	61	64	67	
	OUTSEAM	72	75	77	79	82	84	86	88	90	

Ladies 3/4 Length Pants pictured

BASKETBALL



STANDARD SINGLET

FABRIC - 200gsm Mesh
 CODE - PS-03190 (Adult) / PS-03210 (Youth) / PS-03200 (Ladies)
 SIZING - Adult: S - 3XL / Youth: YS - YXL / Ladies: LS - L2XL
 COLLAR - Round Neck, V-Neck

Additional Information: 2-panel construction from 4-way stretch spandex mesh to assist with breath-ability and comfort • Sublimated ribbed openings • Overlock stitching and double stitched hems • Available in Round or V-Neck.

		Sizes in CM								
ADULT	CM	XS	S	M	L	XL	2XL	3XL	4XL	5XL
	CHEST	-	49	52	55	58	61	64	-	-
	LENGTH	-	76	77	78	80	82	82	-	-
YOUTH	CM	YXS (Y6)	YS (Y8)	YM (Y10)	YL (Y12)	YXL (Y14)				
	CHEST	-	40	43	46	49				
	LENGTH	-	60	63	69	72				
LADIES	CM	LXS (L6)	LS (L8)	LM (L10)	LL (L12)	LXL (L14)	L2XL (L16)	L3XL (L18)	L4XL (L20)	L5XL (L22)
	CHEST	-	47	50	53	56	59	-	-	-
	LENGTH	-	76	78	80	82	84	-	-	-

Mens Standard Singlet pictured



ELITE SINGLET

FABRIC - 190gsm Interlock + 190gsm 4-Way Spandex Mesh
 CODE - PS-03100 (Adult) / PS-03120 (Youth) / PS-03110 (Ladies)
 SIZING - Adult: S - 3XL / Youth: YS - YXL / Ladies: LS - L2XL
 COLLAR - Elite V-Neck

Additional Information: 5-panel construction • Elite style V-Neck • Overlock stitching and double stitched hems • Interlock front panel, 4-way stretch mesh back panel for breath-ability and comfort.

		Sizes in CM								
ADULT	CM	XS	S	M	L	XL	2XL	3XL	4XL	5XL
	CHEST	-	49	52	55	58	61	64	-	-
	LENGTH	-	76	77	78	80	82	82	-	-
YOUTH	CM	YXS (Y6)	YS (Y8)	YM (Y10)	YL (Y12)	YXL (Y14)				
	CHEST	-	40	43	46	49				
	LENGTH	-	60	63	69	72				
LADIES	CM	LXS (L6)	LS (L8)	LM (L10)	LL (L12)	LXL (L14)	L2XL (L16)	L3XL (L18)	L4XL (L20)	L5XL (L22)
	CHEST	-	47	50	53	56	59	-	-	-
	LENGTH	-	76	78	80	82	84	-	-	-

Mens Elite Singlet pictured



SLAM DUNK SINGLET

FABRIC - 180gsm Pinhole Mesh + 190gsm 4-Way Spandex Mesh
 CODE - PS-03160 (Adult) / PS-03180 (Youth) / PS-03170 (Ladies)
 SIZING - Adult: S - 3XL / Youth: YS - YXL / Ladies: LS - L2XL
 COLLAR - Modern A

Additional Information: 4-panel construction • Unique Modern A collar • Overlock stitching and double stitched hems • Interlock front panel, 4-way stretch mesh back panel for breath-ability and comfort.

Sizes in CM

ADULT	CM	XS	S	M	L	XL	2XL	3XL	4XL	5XL
CHEST	-	49	52	55	58	61	64	-	-	-
LENGTH	-	76	77	78	80	82	82	-	-	-

YOUTH	CM	YXS (Y6)	YS (Y8)	YM (Y10)	YL (Y12)	YXL (Y14)
CHEST	-	40	43	46	49	-
LENGTH	-	60	63	69	72	-

LADIES	CM	LXS (L6)	LS (L8)	LM (L10)	LL (L12)	LXL (L14)	L2XL (L16)	L3XL (L18)	L4XL (L20)	L5XL (L22)
CHEST	-	47	50	53	56	59	-	-	-	-
LENGTH	-	76	78	80	82	84	-	-	-	-

Mens Slam Dunk Singlet pictured



REVERSIBLE SINGLET

FABRIC - 130gsm Mesh
 CODE - PS-03250 (Adult) / PS-03270 (Youth) / PS-03260 (Ladies)
 SIZING - Adult: S - 3XL / Youth: YS - YXL / Ladies: LXS - L3XL
 COLLAR - V-Neck Only

Additional Information: 2-panel construction • 2 layer reversible jersey • Overlock stitching and double stitched hems • Outstanding breath-ability, durability and comfort • 2-sided sublimation • V-Neck collar • 1cm binding on neck and arm openings with over lock stitching • Smooth and stylish lightweight interlock fabric.

Sizes in CM

ADULT	CM	XS	S	M	L	XL	2XL	3XL	4XL	5XL
CHEST	-	49	52	55	58	61	64	-	-	-
LENGTH	-	76	77	78	80	82	82	-	-	-

YOUTH	CM	YXS (Y6)	YS (Y8)	YM (Y10)	YL (Y12)	YXL (Y14)
CHEST	-	40	43	46	49	-
LENGTH	-	60	63	69	72	-

LADIES	CM	LXS (L6)	LS (L8)	LM (L10)	LL (L12)	LXL (L14)	L2XL (L16)	L3XL (L18)	L4XL (L20)	L5XL (L22)
CHEST	-	47	50	53	56	59	-	-	-	-
LENGTH	-	76	78	80	82	84	-	-	-	-

Mens Reversible Singlet pictured



Mens Standard Shorts pictured

STANDARD SHORTS

FABRIC - 190gsm Interlock + 190gsm 4-Way Spandex Mesh
 CODE - PS-03220 (Adult) / PS-03240 (Youth) / PS-03230 (Ladies)
 SIZING - Adult: S - 3XL / Youth: YS - YXL / Ladies: LS - L2XL
 WAIST - Drawstring / Optional anti-slip waistband

Additional Information: 4-panel construction • 4-way stretch mesh crotch insert for breath-ability • Comfortable Interlock front and back panels for durability • Drawstring waistband • Reinforced stitching • Optional anti-slip waistband.

Sizes in CM

ADULT	CM	XS	S	M	L	XL	2XL	3XL	4XL	5XL
	1/2 HIP	-	58	61	64	67	70	73	-	-
	OUTSEAM	-	56	57	58	59	60	61	-	-

YOUTH	CM	YXS (Y6)	YS (Y8)	YM (Y10)	YL (Y12)	YXL (Y14)
	1/2 HIP	-	46	48	50	52
	OUTSEAM	-	46	48	50	51

LADIES	CM	LXS (L6)	LS (L8)	LM (L10)	LL (L12)	LXL (L14)	L2XL (L16)	L3XL (L18)	L4XL (L20)	L5XL (L22)
	1/2 HIP	-	60	62	65	68	71	-	-	-
	OUTSEAM	-	49.5	50.5	51.5	52.5	53.5	-	-	-



Mens Elite Shorts pictured

ELITE SHORTS

FABRIC - 190gsm Interlock + 190gsm 4-Way Spandex Mesh
 CODE - PS-03130 (Adult) / PS-03150 (Youth) / PS-03140 (Ladies)
 SIZING - Adult: S - 3XL / Youth: YS - YXL / Ladies: LS - L2XL
 WAIST - Drawstring / Optional anti-slip waistband

Additional Information: Modern styling with accent side inserts • 5 panel construction with side splits • 4-way stretch mesh crotch insert for breath-ability • Comfortable Interlock front and back panels for durability • Drawstring waistband • Reinforced stitching • Optional anti-slip waistband.

Sizes in CM

ADULT	CM	XS	S	M	L	XL	2XL	3XL	4XL	5XL
	1/2 HIP	-	58	61	64	67	70	73	-	-
	OUTSEAM	-	56	57	58	59	60	61	-	-

YOUTH	CM	YXS (Y6)	YS (Y8)	YM (Y10)	YL (Y12)	YXL (Y14)
	1/2 HIP	-	46	48	50	52
	OUTSEAM	-	46	48	50	51

LADIES	CM	LXS (L6)	LS (L8)	LM (L10)	LL (L12)	LXL (L14)	L2XL (L16)	L3XL (L18)	L4XL (L20)	L5XL (L22)
	1/2 HIP	-	60	62	65	68	71	-	-	-
	OUTSEAM	-	49.5	50.5	51.5	52.5	53.5	-	-	-



Adults Reversible Shorts, Side 1 - Top, Side 2 - Bottom pictured

REVERSIBLE SHORTS

FABRIC - 145gsm Interlock
 CODE - PS-03280 (Adult) / PS-03300 (Youth) / PS-03290 (Ladies)
 SIZING - Adult: S - 3XL / Youth: YS - YXL / Ladies: LXS - L3XL
 WAIST - Drawstring

Additional Information: Two layer reversible short • Sealed seams throughout garment • Drawstring waistband • Reinforced stitching • Optional anti-slip waistband • Available in two fabrics depending on jersey chosen.

Sizes in CM

ADULT	CM	XS	S	M	L	XL	2XL	3XL	4XL	5XL
	1/2 HIP	-	58	61	64	67	70	73	-	-
	OUTSEAM	-	56	57	58	59	60	61	-	-

YOUTH	CM	YXS (Y6)	YS (Y8)	YM (Y10)	YL (Y12)	YXL (Y14)
	1/2 HIP	-	46	48	50	52
	OUTSEAM	-	46	48	50	51

LADIES	CM	LXS (L6)	LS (L8)	LM (L10)	LL (L12)	LXL (L14)	L2XL (L16)	L3XL (L18)	L4XL (L20)	L5XL (L22)
	1/2 HIP	-	60	62	65	68	71	-	-	-
	OUTSEAM	-	49.5	50.5	51.5	52.5	53.5	-	-	-

COMPRESSION

COMPRESSION TOP



FABRIC - 220gsm Spandex + 180gsm Milk Mesh
 CODE - Short Sleeve - PS-04120 (Mens) / PS-04130 (Youth) / PS-04140 (Ladies)
 Long Sleeve - PS-04150 (Mens) / PS-04160 (Youth) / PS-04170 (Ladies)
 Sleeveless - PS-04100 (Mens) / PS-04110 (Youth)
 SIZING - Adult: XS - 5XL / Youth: YXS - YXL / Ladies: LXS - L2XL
 COLLAR - Round Neck Only

Additional Information: Accent flat lock stitching and reinforced seams • Helps improve circulation performance and recovery in elite athletes • Durable compression fabric offering incredible range of motion, superb comfort and excellent moisture management.

Sizes in CM

ADULT	CM	XS	S	M	L	XL	2XL	3XL	4XL	5XL
CHEST	40	43	46	49	53	54	59	62	65	
LENGTH	60	62	64	66	69	71	72	74	76	
YOUTH	CM	YXS (Y6)	YS (Y8)	YM (Y10)	YL (Y12)	YXL (Y14)				
CHEST	27	29	33	36	38					
LENGTH	48	50	54	56	58					
LADIES	CM	LXS (L6)	LS (L8)	LM (L10)	LL (L12)	LXL (L14)	L2XL (L16)	L3XL (L18)	L4XL (L20)	L5XL (L22)
CHEST	39	41	44	47	50	53	56	-	-	
LENGTH	60	62	64	66	68	71	72	-	-	

Mens Short Sleeve Compression Top pictured

COMPRESSION LEGGINGS



FABRIC - 220gsm Spandex
 CODE - PS-04210 (Adult) / PS-04220 (Youth) / PS-04230 (Ladies)
 SIZING - Adult: S - 3XL / Youth: YS - YXL / Ladies: LS - L2XL
 WAIST - Flexible waistband with reinforced seams

Additional Information: 3 panel construction • Accent flat lock stitching and reinforced seams • Secure and flexible waistband • Reinforced seams • Helps improve circulation performance and recovery in elite athletes • Durable compression fabric offering incredible range of motion, superb comfort and excellent moisture management.

Sizes in CM

ADULT	CM	XS	S	M	L	XL	2XL	3XL	4XL	5XL
1/2 HIP	40	42	44	46	48	50	52	-	-	
OUTSEAM	85	87	88	89	90	91	91	-	-	
YOUTH	CM	YXS (Y6)	YS (Y8)	YM (Y10)	YL (Y12)	YXL (Y14)				
1/2 HIP	-	33	36	39	42					
OUTSEAM	-	72	76	82	85					
LADIES	CM	LXS (L6)	LS (L8)	LM (L10)	LL (L12)	LXL (L14)	L2XL (L16)	L3XL (L18)	L4XL (L20)	L5XL (L22)
1/2 HIP	33.5	35	36.5	38	39.5	41	-	-	-	
OUTSEAM	83.5	85	86	87	88	89	-	-	-	

Mens Compression Leggings pictured

COMPRESSION SHORTS

FABRIC - 220gsm Spandex
 CODE - PS-04180 (Adult) / PS-04190 (Youth) / PS-04200 (Ladies)
 SIZING - Adult: S - 3XL / Youth: YS - YXL / Ladies: LXS - L2XL
 WAIST - Flexible waistband with reinforced seams

Additional Information: 3 panel construction • Accent flat lock stitching and reinforced seams • Secure and flexible waistband • Reinforced seams • Helps improve circulation performance and recovery in elite athletes • Durable compression fabric offering incredible range of motion, superb comfort and excellent moisture management.



		Sizes in CM									
ADULT	CM	XS	S	M	L	XL	2XL	3XL	4XL	5XL	
	1/2 HIP	37	39	41	43	45	46	-	-	-	
	OUTSEAM	39	41	43	45	47	49	-	-	-	
YOUTH	CM	YXS (Y6)	YS (Y8)	YM (Y10)	YL (Y12)	YXL (Y14)					
	1/2 HIP	-	33	36	39	42					
	OUTSEAM	-	29	31	33	35					
LADIES	CM	LXS (L6)	LS (L8)	LM (L10)	LL (L12)	LXL (L14)	L2XL (L16)	L3XL (L18)	L4XL (L20)	L5XL (L22)	
	1/2 HIP	30	32	34	36	39	42	-	-	-	
	OUTSEAM	31	32	33	34	35	36	-	-	-	

Mens Compression Shorts pictured

COMPRESSION 3/4 LEGGINGS

FABRIC - 220gsm Spandex
 CODE - PS-04240 (Adult) / PS-04250 (Youth) / PS-04260 (Ladies)
 SIZING - Adult: S - 3XL / Youth: YS - YXL / Ladies: LXS - L2XL
 COLLAR - V-Neck Only

Additional Information: 3 panel construction • Accent flat lock stitching and reinforced seams • Secure and flexible waistband • Reinforced seams • Helps improve circulation performance and recovery in elite athletes • Durable compression fabric offering incredible range of motion, superb comfort and excellent moisture management.



		Sizes in CM									
ADULT	CM	XS	S	M	L	XL	2XL	3XL	4XL	5XL	
	1/2 HIP	40	42	44	46	48	50	52	-	-	
	OUTSEAM	64	65	66	66	67	68	70	-	-	
YOUTH	CM	YXS (Y6)	YS (Y8)	YM (Y10)	YL (Y12)	YXL (Y14)					
	1/2 HIP	-	33	36	39	42					
	OUTSEAM	-	54	57	61	63					
LADIES	CM	LXS (L6)	LS (L8)	LM (L10)	LL (L12)	LXL (L14)	L2XL (L16)	L3XL (L18)	L4XL (L20)	L5XL (L22)	
	1/2 HIP	33.5	35	36.5	38	39.5	41	-	-	-	
	OUTSEAM	59	60	61	62	63	64	-	-	-	

Mens (Left) and Ladies (Right) Compression 3/4 Pants pictured

CRICKET



RAGLAN POLO

FABRIC - 145gsm Interlock
 CODE - PS-05100 (Mens) / PS-05120 (Youth) / PS-05110 (Ladies)
 SIZING - Adult: XS - 5XL / Youth: Y6 - Y14 / Ladies: L8 - L24
 COLLAR - Polo

Additional Information:

		Sizes in CM								
ADULT	CM	XS	S	M	L	XL	2XL	3XL	4XL	5XL
	CHEST	52	52	56	58	60	63	66	69	71
	LENGTH	70	70	72	74	76	78	80	82	84
YOUTH	CM	YXS (Y6)	YS (Y8)	YM (Y10)	YL (Y12)	YXL (Y14)				
	CHEST	38	40	42	44	46				
	LENGTH	53	56	59	62	65				
LADIES	CM	LS (L8)	LM (L10)	LL (L12)	LXL (L14)	L2XL (L16)	L3XL (L18)	L4XL (L20)	L5XL (L22)	L6XL (L24)
	CHEST	44	47	50	53	56	59	62	64	66
	LENGTH	64	67	69	71	74	77	80	82	84

Mens Raglan Polo pictured

ELITE RAGLAN POLO

FABRIC - 145gsm Interlock + 190gsm Milk Mesh
 CODE - PS-05210 (Mens) / PS-05220 (Youth) / PS-05230 (Ladies)
 SIZING - Adult: S - 5XL / Youth: Y6 - Y14 / Ladies: L8 - L20
 COLLAR - Polo

Additional Information: 6 panel, 2 button featuring overlock construction and reinforced self collar • Anti-microbial and moisture wicking • Stylish interlock fabric and 4-way stretch mesh for comfort, style and breath-ability • Mens and womens cut • Optional long sleeve and chest pocket.



		Sizes in CM								
ADULT	CM	XS	S	M	L	XL	2XL	3XL	4XL	5XL
	CHEST	-	53.5	56	58.5	62	63	66	69	71
	LENGTH	-	70	72	74	76	78	80	82	84
YOUTH	CM	YXS (Y6)	YS (Y8)	YM (Y10)	YL (Y12)	YXL (Y14)				
	CHEST	37	39.5	42	45.5	49.5				
	LENGTH	49	53	56.5	61.5	66.5				
LADIES	CM	LS (L8)	LM (L10)	LL (L12)	LXL (L14)	L2XL (L16)	L3XL (L18)	L4XL (L20)	L5XL (L22)	L6XL (L24)
	CHEST	45	47.5	50	52.5	55	57.5	60	-	-
	LENGTH	64	66	68	70	72	74	76	-	-

Mens Elite Polo pictured



LONG SLEEVE JERSEY

FABRIC - 230gsm Fleece
 CODE - PS-05130 (Adult) / PS-05140 (Youth)
 SIZING - Adult: XS - 3XL / Youth: Y6 - Y14
 COLLAR - V-Neck Only

Additional Information: Features 6 Panel construction •

		Sizes in CM									
ADULT	CM	XS	S	M	L	XL	2XL	3XL	4XL	5XL	
	CHEST	50	52.5	55	58	61	64	67	-	-	
	LENGTH	74	76	78	80.5	83	85.5	88	-	-	
YOUTH	CM	YXS (Y6)	YS (Y8)	YM (Y10)	YL (Y12)	YXL (Y14)					
	CHEST	38	40	42	44	46					
	LENGTH	53	56	59	62	65					

Mens Raglan Long Sleeve Jersey pictured



VEST / LINED VEST

FABRIC - Vest - 230gsm Fleece
 Lined Vest - 270gsm Interlock + 190gsm Fleece Lining
 CODE - Vest - PS-05170 (Adult) / PS-05190 (Youth)
 Lined Vest - PS-05180 (Adult) / PS-05200 (Youth)
 SIZING - Adult: XS - 7XL / Youth: Y6 - Y14
 COLLAR - V-Neck Only

Additional Information: Classic slip over • Features V-Neck collar • Fleece Lined for superior warmth.

		Sizes in CM									
ADULT	CM	XS	S	M	L	XL	2XL	3XL	4XL	5XL	
	CHEST	49	52	54	58	60	63	66	-	-	
	LENGTH	74	76	78	80.5	83	85.5	88	-	-	
YOUTH	CM	YXS (Y6)	YS (Y8)	YM (Y10)	YL (Y12)	YXL (Y14)					
	CHEST	38	41	43.5	45	47					
	LENGTH	56	60	64	68	72					

Adults Vest pictured



TROUSER

FABRIC - 270gsm Interlock + 200gsm Pearl Mesh
 CODE - PS-05150 (Adult) / PS-05160 (Youth)
 SIZING - Adult: XS - 3XL / Youth: Y6 - Y14
 WAIST - Flexible waistband with reinforced seams

Additional Information: 6 Panel construction • Features pockets, side and back panelling for ventilation
 • Flexy waistband to maintain no slip.

		Sizes in CM									
ADULT	CM	XS	S	M	L	XL	2XL	3XL	4XL	5XL	
	1/2 HIP	49	51.5	54	57	60	63	66	-	-	
	INSEAM	78	80	82	83	84	85	86	-	-	
YOUTH	CM	YXS (Y6)	YS (Y8)	YM (Y10)	YL (Y12)	YXL (Y14)					
	1/2 HIP	37	39.5	42	44.5	46.5					
	INSEAM	55	60	65	70	76					

Adults Cricket Pants pictured

CYCLING

CYCLING JERSEY / LONGSLEEVE



FABRIC - 165gsm Birdeye
 CODE - Short Sleeve - PS-06100 (Adult) / PS-06110 (Youth)
 Long Sleeve - PS-06130 (Adult) / PS-06140 (Youth)
 SIZING - Adult: XS - 4XL / Youth: YXS - YXL
 COLLAR - Rasied Crew-neck

Additional Information: Lightweight, comfortable and highly breathable birdeye mesh fabric • Full zip front • Three pocket back design for drink bottle etc • Available in short sleeve or longsleeve.

		Sizes in CM									
ADULT	CM	XS	S	M	L	XL	2XL	3XL	4XL	5XL	
	CHEST	46	48	50	52	54	56	58	60	-	
	LENGTH	65	66	68	70	72	74	76	78	-	
YOUTH	CM	YXS (Y6)	YS (Y8)	YM (Y10)	YL (Y12)	YXL (Y14)					
	CHEST	36	38	40	42	44					
	LENGTH	55	57	59	61	63					

Adults Short Sleeve Cycling Jersey pictured

BMX LONGSLEEVE JERSEY

FABRIC - 190gsm Interlock
 CODE - Long Sleeve - PS-01160 (Adult) / PS-01170 (Youth)
 SIZING - Youth: YS - YXL / Adult: S - 5XL
 COLLAR - Hooded

Additional Information: Extended back length • Stylish V-Neck collar with insert • Spandex mesh side panels for comfort and breath-ability • Anti-slip silicone waistband at bottom of jersey to keep tucked in.

		Sizes in CM									
ADULT	CM	XS	S	M	L	XL	2XL	3XL	4XL	5XL	
	CHEST	-	53.5	56	58.5	62	66	68.5	70.5	72.5	
	LENGTH	-	71	73.5	76	78.5	81	83.5	86	88	
YOUTH	CM	YXS (Y6)	YS (Y8)	YM (Y10)	YL (Y12)	YXL (Y14)					
	CHEST	37	39.5	42	45.5	49.5					
	LENGTH	46	49.5	54	58.5	63.5					

Adults BMX Long Sleeve Jersey pictured



Ladies Short Sleeve Cycling Jersey pictured

HOCKEY



MENS / YOUTH PLAYING TOP

FABRIC - 145gsm Interlock + 180gsm Milk Mesh Side Panels

CODE - PS-07220 (Mens) / PS-07230 (Youth)

SIZING - Adult: S - 4XL / Youth: YXS - YXL

COLLAR - Round Neck, V- Neck, Modified Round Neck

Additional Information: 6 panel construction • 4-way stretch mesh inserts for ventilation • Interlock body panels • 3 collars available.

Sizes in CM

ADULT	CM	XS	S	M	L	XL	2XL	3XL	4XL	5XL
CHEST	-	53.5	56	58.5	62	66	68.5	71	-	-
LENGTH	-	71	73.5	76	78.5	81	83.5	86	-	-

YOUTH	CM	YXS (Y6)	YS (Y8)	YM (Y10)	YL (Y12)	YXL (Y14)
CHEST	-	37	39.5	42	45.5	49.5
LENGTH	-	46	49.5	54	58.5	63.5

Mens Playing Top pictured

LADIES PLAYING TOP / RACERBACK SINGLET

FABRIC - 220gsm Spandex (front) + 180gsm Milk Mesh (back)

CODE - Playing Top - PS-07160 (Ladies) / PS-07170 (Girls)
Racerback Singlet - PS-07140 (Ladies) / PS-07150 (Girls)

SIZING - Ladies: LS - LXL / Girls: GS - GXL

COLLAR - V-Neck Only

Additional Information: 4 panel construction • Overlock stitching and reinforced seams • Solid compression front panel, 4-way stretch back panel which offers great comfort, range of motion and breath-ability.

Sizes in CM

LADIES	CM	LXS (L6)	LS (L8)	LM (L10)	LL (L12)	LXL (L14)	L2XL (L16)	L3XL (L18)	L4XL (L20)	L5XL (L22)
CHEST	-	39	41	43	45	47	49	-	-	-
LENGTH	-	64	66	68	70	72	74	-	-	-

YOUTH	CM	GXS (G6)	GS (G8)	GM (G10)	GL (G12)	GXL (G14)
CHEST	-	-	31	33	35	37
LENGTH	-	-	52	56	60	62



Ladies Playing Top pictured



STANDARD / RACERBACK DRESS

FABRIC - 200gsm Interlock + 220gsm Spandex side panels
 CODE - Standard - **PS-07100** (Ladies) / **PS-07110** (Girls)
 Racerback - **PS-07120** (Ladies) / **PS-07130** (Girls)
 SIZING - Ladies: L8 - L24 / Girls: Y4 - Y14
 COLLAR - Round Neck, V-Neck

Additional Information: Perfect for the serious netballer at any level • Classy and comfortable birdseye mesh construction • Pre-fitted velcro tabs on front and back • Stylish, durable and great fit.

		Sizes in CM								
LADIES	CM	LS (L8)	LM (L10)	LL (L12)	LXL (L14)	L2XL (L16)	L3XL (L18)	L4XL (L20)	L5XL (L22)	L6XL (L24)
	CHEST	36	39	41	44	46	49	51	54	56
	LENGTH	74	77	81	84	89	94	97	101	103
YOUTH	CM	YXS (Y6)	YS (Y8)	YM (Y10)	YL (Y12)	YXL (Y14)				
	CHEST	31	34	36	39	41				
	LENGTH	67	72	74	77	84				

Ladies Standard Dress pictured



SKIRT / SKORT

FABRIC - Skirt - 190gsm Interlock
 Skort - 190gsm Interlock + 220gsm Spandex Shorts
 CODE - Skirt - **PS-07180** (Ladies) / **PS-07190** (Girls)
 Skort - **PS-07200** (Ladies) / **PS-07210** (Girls)
 SIZING - Ladies: LXS - LXL / Girls: GS - GXL
 WAIST - Elastic waistband

Additional Information: Skirt - 2 panel construction • Made from compression spandex for excellent comfort and range of motion • Skort only - integrated compression shorts • Elasticated waistband.

		Sizes in CM								
LADIES	CM	LXS (L6)	LS (L8)	LM (L10)	LL (L12)	LXL (L14)	L2XL (L16)	L3XL (L18)	L4XL (L20)	L5XL (L22)
	1/2 WAIST	35	36.5	38	41	44	47	49	-	-
	OUTSEAM	32.5	33.5	34.5	35.5	36.5	37.5	38.5	-	-
YOUTH	CM	GXS (G6)	GS (G8)	GM (G10)	GL (G12)	GXL (G14)				
	1/2 WAIST	-	27	29	31	33				
	OUTSEAM	-	28.5	29.5	30.5	31.5				

Ladies Skirt pictured



PREMIER SHORTS

FABRIC - 145gsm Interlock + 180gsm Milk Mesh Insert
 CODE - **PS-07240** (Mens) / **PS-07250** (Youth)
 SIZING - Adult: S - 4XL / Youth: YXS - YXL
 WAIST - Elastic waistband

Additional Information: 5 panel construction • Drawstring elasticated waistband • 4-way stretch mesh ventilation inserts inside and crotch • Overlock stitching throughout.

		Sizes in CM								
ADULT	CM	XS	S	M	L	XL	2XL	3XL	4XL	5XL
	1/2 WAIST (R)	-	33	35.5	38	42	45.5	48	50	-
	OUTSEAM	-	47	48	49	51	52	54	55	-
YOUTH	CM	YXS (Y6)	YS (Y8)	YM (Y10)	YL (Y12)	YXL (Y14)				
	1/2 WAIST (R)	24	26	28	30.5	33				
	OUTSEAM	30	32.5	34.5	38	41				

Adults Premier Shorts pictured

ICE HOCKEY

PLAYING JERSEY / GOALIE JERSEY



FABRIC - 200gsm Birdeye
 CODE - Playing - **PS-08100** (Adult) / **PS-08110** (Youth)
 Goalie - **PS-08120**
 SIZING - Adult: S - 3XL / Youth: S - 5XL / Goalie: Y (Youth), I (Intermediate), A (Adult)
 COLLAR - Lace Collar

Additional Information: Inspired from todays Pro jerseys • Features a unique multi-layer collar with insert for logo placement • Double shoulders, elbows and reinforced stitching throughout • Lace neck option available • Classic yoke styling is perfect for names and league identification.

		Sizes in CM								
ADULT	CM	XS	S	M	L	XL	2XL	3XL	4XL	5XL
	CHEST	-	63.5	66	68.6	72.7	76.8	80.9	-	-
	LENGTH	-	66	68	70	72	74	76	-	-
YOUTH	CM	YXS (Y6)	YS (Y8)	YM (Y10)	YL (Y12)	YXL (Y14)				
	CHEST	44.5	47.9	51.4	54	56.5				
	LENGTH	59.7	62.9	67.3	71.1	74.5				
GOALIE	CM	YGC	IGC	AGC						
	CHEST	63.5	72.7	81.3	-	-				
	LENGTH	73.7	81.3	86.4	-	-				

Mens Playing Jersey pictured

PLAYING PANT SHELL



FABRIC - 270gsm Interlock
 CODE - **PS-08130** (Adult) / **PS-08140** (Youth)
 SIZING - Adult: S - 2XL / Youth: YS - YXL
 WAIST - Drawstring + Elastic waistband

Additional Information: Inspired from todays Pro shorts

		Sizes in CM								
ADULT	CM	XS	S	M	L	XL	2XL	3XL	4XL	5XL
	1/2 HIP	-	61	64	67	69	71	73	-	-
	OUTSEAM	-	56	57	58.5	58.5	58.5	60	-	-
YOUTH	CM	YXS (Y6)	YS (Y8)	YM (Y10)	YL (Y12)	YXL (Y14)				
	1/2 HIP	51	53	55	57	59				
	OUTSEAM	40	42	44	46	47				

Mens Playing Pant Shell pictured

PLAYING SOCKS



FABRIC - 200gsm Birdeye
 CODE - **PS-08150** (Adult) / **PS-08160** (Youth)
 SIZING - Adult: S-M, L-XL, 2XL / Youth: YS-YM, YL-YXL

Additional Information: Double layer reinforced knee • Velcro strips • Double stitching throughout.

		Sizes in CM				
YOUTH / ADULT	CM	YS-YM	YL-YXL	S-M	L-XL	2XL
	KNEE WIDTH	21	24	26.75	28.5	28.5
	LENGTH	50.5	60.5	71	76	81

Mens Playing Socks pictured

NETBALL



STANDARD / RACERBACK DRESS

FABRIC - 200gsm Interlock + 220gsm Spandex (side panels)
 CODE - Standard - **PS-09100** (Ladies) / **PS-09110** (Girls)
 Racerback - **PS-09120** (Ladies) / **PS-09130** (Girls)
 SIZING - Ladies: L8 - L24 / Girls: Y6 - Y14
 COLLAR - Round Neck, V-Neck

Additional Information: Features 4 panel construction with spandex side panels • Pre-fitted Velcro tabs front and back

		Sizes in CM									
LADIES	CM	LS (L8)	LM (L10)	LL (L12)	LXL (L14)	L2XL (L16)	L3XL (L18)	L4XL (L20)	L5XL (L22)	L6XL (L24)	
	CHEST	36	39	41	44	46	49	51	54	56	
	LENGTH	74	77	81	84	89	94	97	101	103	
YOUTH	CM	YXS (Y6)	YS (Y8)	YM (Y10)	YL (Y12)	YXL (Y14)					
	CHEST	31	34	36	39	41					
	LENGTH	67	72	74	77	84					

Ladies Standard Dress pictured



ELITE A-LINE DRESS

FABRIC - 200gsm Birdeye + 220gsm Spandex (side panels)
 CODE - **PS-09140** (Ladies) / **PS-09150** (Girls)
 SIZING - Ladies: L8 - L24 / Girls: Y6 - Y14
 COLLAR - V-Neck Only

Additional Information: Features 5 panel construction for stylish look • Spandex side panels for greater mobility • Pre-fitted Velcro tabs front and back.

		Sizes in CM									
LADIES	CM	LS (L8)	LM (L10)	LL (L12)	LXL (L14)	L2XL (L16)	L3XL (L18)	L4XL (L20)	L5XL (L22)	L6XL (L24)	
	CHEST	43	45	48	49.5	52.5	55	57	61	63	
	LENGTH	86	87	90	93	95	97	100	102	104	
YOUTH	CM	YXS (Y6)	YS (Y8)	YM (Y10)	YL (Y12)	YXL (Y14)					
	CHEST	30.5	34	35.5	38	40					
	LENGTH	66	70	74	78	82					

Ladies Elite A-Line Dress pictured



LADIES PLAYING TOP / SLEEVELESS TOP

FABRIC - Playing: 165gsm Birdeye
 Sleeveless: 250gsm Spandex
 CODE - Playing: **PS-09160** (Ladies) / **PS-09170** (Girls)
 Sleeveless: **PS-09180** (Ladies) / **PS-09190** (Girls)
 SIZING - Ladies: L8 - L24 / Girls: Y6 - Y14
 COLLAR - Volo

Additional Information: Stylish and comfortable • Easy Fit • Features a modern lapel collar • Velcro tabs front and back

		Sizes in CM									
LADIES	CM	LS (L8)	LM (L10)	LL (L12)	LXL (L14)	L2XL (L16)	L3XL (L18)	L4XL (L20)	L5XL (L22)	L6XL (L24)	
	CHEST	46.5	49	51.5	54	56.5	59	62	65	68	
	LENGTH	67	69	71	73	75	77	79	81	83	
YOUTH	CM	YXS (Y6)	YS (Y8)	YM (Y10)	YL (Y12)	YXL (Y14)					
	CHEST	33	35	37	39	40					
	LENGTH	48	50	51	53	55					

Ladies Sleeveless Top pictured



LADIES PLAYING SINGLET

FABRIC - 165gsm Birdeye
 CODE - PS-09200 (Ladies) / PS-09210 (Girls)
 SIZING - Ladies: L8 - L24 / Girl: Y6 - Y14
 COLLAR - Round Neck, V-Neck

Additional Information: Basic 2 panel netball singlet • Slim Fit with pre-fitted Velcro tabs • Available in round and V neck

LADIES	CM	Sizes in CM								
		LS (L8)	LM (L10)	LL (L12)	LXL (L14)	L2XL (L16)	L3XL (L18)	L4XL (L20)	L5XL (L22)	L6XL (L24)
	CHEST	44	46	48	50	52	54	56	58	60
	LENGTH	60	62	64	66	68	70	72	74	76

YOUTH	CM	Sizes in CM				
		YXS (Y6)	YS (Y8)	YM (Y10)	YL (Y12)	YXL (Y14)
	CHEST	34	36	38	40	42
	LENGTH	50	52	54	56	58

Ladies Playing Singlet pictured



FULL SKIRT / WRAP SKIRT / SKORT

FABRIC - Skirt / Wrap Skirt - 165gsm Birdeye
 Skort - 200gsm Interlock + 220gsm Spandex Shorts
 CODE - Full Skirt - PS-09220 (Ladies) / PS-09230 (Girls)
 Wrap Skirt - PS-09240 (Ladies) / PS-09250 (Girls)
 Skort - PS-09260 (Ladies) / PS-09270 (Girls)
 SIZING - Ladies: L8 - L24 / Girl: Y6 - Y14
 WAIST - Elastic waistband

Additional Information: Constructed for excellent comfort and range of motion • Available in 3 different styles • Skort has fully intergrated and sublimated spandex compression shorts.

LADIES	CM	Sizes in CM								
		LS (L8)	LM (L10)	LL (L12)	LXL (L14)	L2XL (L16)	L3XL (L18)	L4XL (L20)	L5XL (L22)	L6XL (L24)
	1/2 WAIST	30	32	34	36	38	40	42	44	46
	OUTSEAM	38	39	40	41	42	43	44	45	46

YOUTH	CM	Sizes in CM				
		YXS (Y6)	YS (Y8)	YM (Y10)	YL (Y12)	YXL (Y14)
	1/2 WAIST	22	23	24	25	26
	OUTSEAM	32	33	34	35	36

Ladies Wrap Skirt (Top) & Ladies Full Skirt pictured

SET OF 14

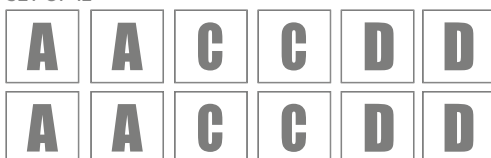


BIB SETS

FABRIC - 140gsm Birdeye
 CODE - Set of 14 (GK, GA, etc) - PS-09280
 Set of 12 (AA, BB, etc) - PS-09290

Additional Information: Comes in a set of 14 or 12 • Pre-fitted with Velcro tabs (hook side) to attach to our Netball tops and Dresses • Letters measures 15cm high • Fabric can match netball gears.

SET OF 12



Netball Bibs pictured

ROWING



ROWSUIT

FABRIC - 250gsm Spandex + 220gsm Hybrid Spandex (Bottom half)
 CODE - **PS-10100** (Adult) / **PS-10110** (Youth) / **PS-10120** (Ladies)
 SIZING - Adult: XS - 6XL / Youth: Y6 - Y14 / Ladies: L2 - L16
 COLLAR - Scoop Neck

Additional Information: Sublimated top and pre-dyed hybrid bottom • Hybrid bottom only available in black • Made from performance spandex • Ladies style comes in double layer for increased comfort and durability.

Sizes in CM

ADULT	CM	XS	S	M	L	XL	2XL	3XL	4XL	5XL
	CHEST	39.5	41	42.5	44	45.5	47	48.5	50	51.5
	LENGTH	85	88	91	94	97	100	103	106	109
	INSEAM	19.5	20.5	22	21	22.5	23.5	25	26.5	28

YOUTH	CM	YXS (Y6)	YS (Y8)	YM (Y10)	YL (Y12)	YXL (Y14)
	CHEST	29.5	31.5	33.5	35.5	37.5
	LENGTH	74	76	78	80	82
	INSEAM	15	15.5	16	16.5	17

LADIES	CM	4XS (L2)	3XS (L4)	2XS (L6)	XS (L8)	S (L10)	M (L12)	L (L14)	XL (L16)	2XL (L18)
	CHEST	26	28	30	32	34	36	38	40	42
	LENGTH	74	76	78	80	82	84	86	88	90
	INSEAM	17	17	17	19.5	19.5	22	22	22	22

Mens Rowsuit pictured

RUGBY / RUGBY LEAGUE



Available Collars (7):



STANDARD FIT JERSEY

FABRIC - 270gsm Interlock
 CODE - PS-11100 (Adult) / PS-11110 (Youth)
 SIZING - Adult: XS - 5XL / Youth: Y4 - Y16
 COLLAR - Standard, Round Neck, V- Neck, Champion, Traditional, Granddad, U-Neck

Additional Information: Made from heavy interlock fabric • Reinforced seams and taped collar for extra strength • Traditional easy fit • Available in 7 different collar options.

Sizes in CM

ADULT	CM	XS	S	M	L	XL	2XL	3XL	4XL	5XL
	CHEST	52	55	57.5	60	62.5	65	67.5	70	72.5
	LENGTH	72	74	76	78	80	82	84	86	88

YOUTH	CM	Y2XS (Y4)	YXS (Y6)	YS (Y8)	YM (Y10)	YL (Y12)	YXL (Y14)	Y2XL (Y16)
	CHEST	36	38	40	42	44	46	49
	LENGTH	50	52	56	60	64	68	70

Mens Standard Fit - Standard Collar pictured



PRO-FIT JERSEY

FABRIC - 260gsm Poly-Spandex
 CODE - PS-11120 (Adult) / PS-11130 (Youth) / PS-11140 (Ladies)
 SIZING - Adult: XS - 5XL / Youth: Y4 - Y14 / Ladies: L6 - L18
 COLLAR - Standard, Round Neck, V- Neck, Champion, Traditional, Granddad, U-Neck

Additional Information: Modern compression fit jersey made from heavyweight poly spandex fabric for flexibility • Reinforced seams for durability • Available in 7 different collars.

Sizes in CM

ADULT	CM	XS	S	M	L	XL	2XL	3XL	4XL	5XL
	CHEST	41	43.5	46	49	52	55	58	61	64
	LENGTH	67	69	71	73	76	78	80	83	85

YOUTH	CM	Y2XS (Y4)	YXS (Y6)	YS (Y8)	YM (Y10)	YL (Y12)	YXL (Y14)
	CHEST	27.5	29.5	32	34.5	37	38.5
	LENGTH	50	52	56	60	64	68

LADIES	CM	LXS (L6)	LS (L8)	LM (L10)	LL (L12)	LXL (L14)	L2XL (L16)	L3XL (L18)	L4XL (L20)	L5XL (L22)
	CHEST	39	41	43	45	47	49	51	-	-
	LENGTH	60	62	64	66	68	70	72	-	-

Mens ProFit - Champion Collar pictured



TAPERED FIT JERSEY

FABRIC - 270gsm Interlock
 CODE - PS-11150 (Adult) / PS-11160 (Youth)
 SIZING - Adult: XS - 5XL / Youth: Y6 - Y14
 COLLAR - Standard, Round Neck, V- Neck, Champion, Traditional, Grandad, U-Neck

Additional Information: Designed for premier teams • Made front heavy interlock or poly spandex • Tapered style for slight slim fit look • Reinforced seams for extra strength.

		Sizes in CM								
ADULT	CM	XS	S	M	L	XL	2XL	3XL	4XL	5XL
	CHEST	51	53	55	57	59	61	63	66	69
	LENGTH	70	71	73	76	78	79	81	82	83
YOUTH	CM	YXS (Y6)	YS (Y8)	YM (Y10)	YL (Y12)	YXL (Y14)				
	CHEST	36	38	40	42	49				
	LENGTH	50	52	54	56	68				

Mens Tapered Fit - Round Neck Collar pictured

LONGSLEEVE JERSEY

FABRIC - 270gsm Interlock + 220gsm Twill Collar
 CODE - PS-11170 (Adult) / PS-11180 (Youth)
 SIZING - Adult: XS - 5XL / Youth: Y8 - Y16
 COLLAR - Traditional Only

Additional Information: Classically designed rugby jersey with regular fold down collar and 3 button placket • Made from heavy interlock fabric • Self fabric cuff bands.



		Sizes in CM								
ADULT	CM	XS	S	M	L	XL	2XL	3XL	4XL	5XL
	CHEST	53.5	56	58.5	61	63.5	66	68.5	71	73.5
	LENGTH	72	74	76	78	80	82	84	86	88
YOUTH	CM	YS (Y8)	YM (Y10)	YL (Y12)	YXL (Y14)	Y2XL (Y16)				
	CHEST	41	43.5	46	48.5	51				
	LENGTH	62	64	66	68	70				

Mens Longsleeve Jersey - Traditional Collar pictured

UNION SHORTS - STANDARD



FABRIC - 220gsm Twill + 260gsm Spandex (crotch insert)
 CODE - PS-11190 (Adult) / PS-11200 (Youth) / PS-11210 (Ladies)
 SIZING - Adult: XS - 5XL / Youth: Y6 - Y14
 COLLAR - Elastic waistband

Additional Information: Traditional rugby shorts with additional spandex crotch insert for extra flexibility and mobility • Made from heavy woven poly twill • Optional anti-slip waistband.

Sizes in CM

ADULT	CM	XS	S	M	L	XL	2XL	3XL	4XL	5XL
	1/2 HIP	52	54.5	57	60	63	66	69	72	75
	OUTSEAM	35.5	37	38.5	40	41.5	43	44.5	46	47.5

YOUTH	CM	YXS (Y6)	YS (Y8)	YM (Y10)	YL (Y12)	YXL (Y14)
	1/2 HIP	35	37.5	40	42.5	49.5
	OUTSEAM	29.5	30.5	32	33	34

Mens Union Shorts - Standard pictured

ELITE SHORTS



FABRIC - 220gsm Twill + 260gsm Spandex (crotch insert)
 CODE - PS-11220 (Adult) / PS-11230 (Youth) / PS-11240 (Ladies)
 SIZING - Adult: XS - 5XL / Youth: Y6 - Y14
 WAIST - Elastic waistband

Additional Information: Features 6 panel construction with piping • Made from a combination of durable twill and heavy interlock fabric • Spandex crotch insert for extra mobility • Optional anti-slip waistband.

Sizes in CM

ADULT	CM	XS	S	M	L	XL	2XL	3XL	4XL	5XL
	1/2 HIP	52	54.5	57	60	63	66	69	72	75
	OUTSEAM	35.5	37	38.5	40	41.5	43	44.5	46	47.5

YOUTH	CM	YXS (Y6)	YS (Y8)	YM (Y10)	YL (Y12)	YXL (Y14)
	1/2 HIP	35	37.5	40	42.5	49.5
	OUTSEAM	29.5	30.5	32	33	34

SOCCER



STANDARD PLAYING TOP

FABRIC - 200gsm Birdeye
 CODE - PS-12100 (Adult) / PS-12110 (Youth)
 SIZING - Adult: S - 4XL / Youth: Y6 - Y16
 COLLAR - Round-Tab, V-Tab

Additional Information: Features 6 panel construction • 4 way mesh side panels for ventilation

Sizes in CM

ADULT	CM	XS	S	M	L	XL	2XL	3XL	4XL	5XL
	CHEST	-	53.5	56	58.5	62	66	68.5	71	
	LENGTH	-	71	73.5	76	78.5	81	83.5	86	

YOUTH	CM	YXS (Y6)	YS (Y8)	YM (Y10)	YL (Y12)	YXL (Y14)
	CHEST	37	39.5	42	45.5	49.5
	LENGTH	46	49.5	54	58.5	63.5

Mens -----



PREMIER PLAYING TOP / LONGSLEEVE

FABRIC - 165gsm Waffle
 CODE - Top - PS-12120 (Adult) / PS-12130 (Youth)
 Longsleeve - PS-12140 (Adult) / PS-12150 (Youth)
 SIZING - Adult: S - 4XL / Youth: Y6 - Y16
 COLLAR - Round-Tab Only

Additional Information: 2 Panel construction • Features round neck with tab • Overlock stitching and reinforced seams

Sizes in CM

ADULT	CM	XS	S	M	L	XL	2XL	3XL	4XL	5XL
	CHEST	49	52	55	58	62	65	67	70	73
	LENGTH	71	72	73	74	76	78	80	82	84

YOUTH	CM	YXS (Y6)	YS (Y8)	YM (Y10)	YL (Y12)	YXL (Y14)
	CHEST	38	40	42	45	47
	LENGTH	61	63	65	67	69

Mens -----



GOALIE JERSEY

FABRIC - 145gsm Interlock + 180gsm Milk Mesh (sides)
 CODE - PS-12200 (Adult) / PS-12210 (Youth)
 SIZING - Adult: S - 5XL / Youth: Y6 - Y14
 COLLAR - V-Neck Only

Additional Information: Long sleeve design features V neck collar and padded elbows.

Sizes in CM

ADULT	CM	XS	S	M	L	XL	2XL	3XL	4XL	5XL
	CHEST	-	53.5	56	58.5	62	66	68.5	71.5	74.5
	LENGTH	-	71	73.5	76	78.5	81	83.5	86	88.5

YOUTH	CM	YXS (Y6)	YS (Y8)	YM (Y10)	YL (Y12)	YXL (Y14)
	CHEST	37	39.5	42	45.5	49.5
	LENGTH	46	49.5	54	58.5	63.5

Adults Goalie Jersey pictured

STANDARD PLAYING SHORTS



FABRIC - 145gsm Interlock + 180gsm Milk Mesh (crotch insert)
 CODE - PS-12160 (Adult) / PS-12170 (Youth)
 SIZING - Adult: S - 4XL / Youth: Y6 - Y16
 WAIST - Elastic waistband

Additional Information: 4 panel construction • Elasticated waistband with drawstring • 4 way mesh insert for ventilation.

		Sizes in CM								
ADULT	CM	XS	S	M	L	XL	2XL	3XL	4XL	5XL
	1/2 WAIST (R)	-	33	35.5	38	42	45.5	48	50	-
	OUTSEAM	-	47	48	49	51	52	54	55	-
YOUTH	CM	YXS (Y6)	YS (Y8)	YM (Y10)	YL (Y12)	YXL (Y14)				
	1/2 WAIST (R)	24	26	28	30.5	33				
	OUTSEAM	30	32.5	34.5	38	41				

Adults Standard Playing Shorts pictured

PREMIER PLAYING SHORTS



FABRIC - 145gsm Interlock + 180gsm Milk Mesh (crotch insert)
 CODE - PS-12180 (Adult) / PS-12190 (Youth)
 SIZING - Adult: S - 4XL / Youth: Y6 - Y16
 WAIST - Elastic waistband

Additional Information: Features 5 panel constructions • 4 way stretch mesh inserts for ventilation • overlock stitching with reinforced seams.

		Sizes in CM								
ADULT	CM	XS	S	M	L	XL	2XL	3XL	4XL	5XL
	1/2 WAIST (R)	-	33	35.5	38	42	45.5	48	50	-
	OUTSEAM	-	47	48	49	51	52	54	55	-
YOUTH	CM	YXS (Y6)	YS (Y8)	YM (Y10)	YL (Y12)	YXL (Y14)				
	1/2 WAIST (R)	24	26	28	30.5	33				
	OUTSEAM	30	32.5	34.5	38	41				

Adults Premier Playing Shorts pictured

TRACK / ATHLETICS



STANDARD TRACK SINGLET

FABRIC - 160gsm Waffle + 180gsm Milk Mesh
 CODE - PS-14130 (Adult) / PS-14140 (Youth) / PS-14150 (Ladies)
 SIZING - Adult: S - 3XL / Youth: YS - YXL / Ladies: L6 - L20
 COLLAR - Round Neck

Additional Information: Traditionally designed running singlet • Made from our lightweight and highly breathable waffle fabric on the front and 4 way stretch mesh back

Sizes in CM

ADULT	CM	XS	S	M	L	XL	2XL	3XL	4XL	5XL
	CHEST	-	47	51	55	59	63	67	-	-
	LENGTH	-	70	72	74	76	78	80	-	-

YOUTH	CM	YXS (Y6)	YS (Y8)	YM (Y10)	YL (Y12)	YXL (Y14)
	CHEST	-	40.5	43	45.8	48
	LENGTH	-	55	57	60	63

LADIES	CM	LXS (L6)	LS (L8)	LM (L10)	LL (L12)	LXL (L14)	L2XL (L18)	L3XL (L20)	L4XL (L22)	L5XL (L24)
	CHEST	37.5	40.5	43	45.5	50.5	55	58	-	-
	LENGTH	63	65	67	69	71	73	75	-	-

Ladies Standard Track Singlet pictured



ELITE TRACK SINGLET

FABRIC - 220gsm Spandex + 180gsm Milk Mesh back panel
 CODE - PS-14100 (Adult) / PS-14110 (Youth) / PS-14120 (Ladies)
 SIZING - Adult: S - XL / Youth: YXS - YXL / Ladies: L6 - L14
 COLLAR - Round Neck

Additional Information: Features 4 panels • Manufactured in spandex with 4 way mesh back panel which offers complete range of motion and ventilation • Available in mens and ladies cut

Sizes in CM

ADULT	CM	XS	S	M	L	XL	2XL	3XL	4XL	5XL
	CHEST	-	43	46	50	53	-	-	-	-
	LENGTH	-	70	72	74	76	-	-	-	-

YOUTH	CM	YXS (Y6)	YS (Y8)	YM (Y10)	YL (Y12)	YXL (Y14)
	CHEST	33	35	37	39	41
	LENGTH	53	55	57	60	63

LADIES	CM	LXS (L6)	LS (L8)	LM (L10)	LL (L12)	LXL (L14)	L2XL (L18)	L3XL (L20)	L4XL (L22)	L5XL (L24)
	CHEST	31.5	34.5	37.5	40.5	43.5	-	-	-	-
	LENGTH	63	65	67	69	71	-	-	-	-

Elite Track Singlet pictured



LADIES CROP TOP

FABRIC - 250gsm Spandex
 CODE - PS-14160 (Ladies)
 SIZING - Ladies: L6 - L14
 COLLAR - Round Neck

Additional Information: Features racer back design • Made from compression fabric

Sizes in CM

LADIES	CM	LXS (L6)	LS (L8)	LM (L10)	LL (L12)	LXL (L14)	L2XL (L18)	L3XL (L20)	L4XL (L22)	L5XL (L24)
	CHEST	31	34	37	40	50.5	-	-	-	-
	LENGTH	29	31	33	35	37	-	-	-	-

Ladies Crop Top pictured



TRACK SHORTS

FABRIC - 120gsm Spandex Woven
 CODE - PS-14170 (Adult) / PS-14180 (Ladies)
 SIZING - Adult: XS - 2XL / Ladies: L6 - L14
 WAIST - Elastic waistband

Additional Information: Traditional loose fit track shorts • Spandex woven body with accent piping and mesh brief insert.

Sizes in CM

ADULT	CM	XS	S	M	L	XL	2XL	3XL	4XL	5XL
	1/2 HIP	47	51	55	59	63	67	-	-	-
	OUTSEAM	31	32	33	34	35	36	-	-	-

Sizes in CM

LADIES	CM	LXS (L6)	LS (L8)	LM (L10)	LL (L12)	LXL (L14)	L2XL (L18)	L3XL (L20)	L4XL (L22)	L5XL (L24)
	1/2 HIP	47	49	51	53	55	-	-	-	-
	OUTSEAM	24	25	26	27	28	-	-	-	-

Ladies Track Shorts pictured

VOLLEYBALL

LADIES CAP / LONG / SLEEVELESS JERSEY



FABRIC - 220gsm Spandex + 180gsm Milk Mesh
 CODE - Sleeveless - PS-15100
 Cap Sleeve - PS-15110
 Longsleeve - PS-15120
 SIZING - Ladies: L6 - L18
 COLLAR - Round Neck Only

Additional Information: Made from compression spandex with 4ways mesh back panel for ventilation and maximum range of motion.

		Sizes in CM								
LADIES	CM	LXS (L6)	LS (L8)	LM (L10)	LL (L12)	LXL (L14)	L2XL (L18)	L3XL (L20)	L4XL (L22)	L5XL (L24)
	CHEST	39	41	43	45	47	49	-	-	-
	LENGTH	64	66	68	70	72	74	-	-	-

Ladies Cap Sleeve Jersey pictured

MENS SHORT SLEEVE / SLEEVELESS JERSEY



FABRIC - 165gsm Waffle + 180gsm Milk Mesh
 CODE - Short Sleeve - PS-15140
 Sleeveless - PS-15150
 SIZING - Adult: S - 4XL
 COLLAR - Modified Round

Additional Information: Features 6-panel construction • 4-way stretch mesh inserts for ventilation • Waffle body panels • Modified crew neck collar and overlock stitching.

		Sizes in CM								
ADULT	CM	XS	S	M	L	XL	2XL	3XL	4XL	5XL
	CHEST	-	53.5	56	58.5	62	66	68.5	71	-
	LENGTH	-	71	73.5	76	78.5	81	83.5	86	-

YOUTH	CM	YXS (Y6)	YS (Y8)	YM (Y10)	YL (Y12)	YXL (Y14)
	CHEST	37	39.5	42	45.5	49.5
	LENGTH	46	49.5	54	58.5	63.5

Mens Sleeveless Jersey pictured



PLAYING SHORTS

FABRIC - 145gsm Interlock + 180gsm Milk Mesh
 CODE - PS-15160 (Adult)
 SIZING - Adult: S - 4XL
 WAIST - Elastic waistband

Additional Information: 4-panel construction • Elasticated waistband with drawstring • Features 4-way mesh insert for ventilation.

Sizes in CM

ADULT	CM	XS	S	M	L	XL	2XL	3XL	4XL	5XL
	1/2 WAIST (R)	-	33	35.5	38	42	45.5	48	50	-
	OUTSEAM	-	47	48	49	51	52	54	55	-

YOUTH	CM	YXS (Y6)	YS (Y8)	YM (Y10)	YL (Y12)	YXL (Y14)
	1/2 WAIST (R)	24	26	28	30.5	33
	OUTSEAM	30	32.5	34.5	38	41

Adults Playing Shorts pictured



LADIES PLAYING SPANKS

FABRIC - 250gsm Spandex
 CODE - PS-15130 (Ladies)
 SIZING - Ladies: L6 - L18
 WAIST - Compression Spandex waistband

Additional Information: Compression fit short that features our moisture wicking spandex fabric that offers complete range of motion.

Sizes in CM

LADIES	CM	LXS (L6)	LS (L8)	LM (L10)	LL (L12)	LXL (L14)	L2XL (L18)	L3XL (L20)	L4XL (L22)	L5XL (L24)
	1/2 HIP	35	37	39	41	43	45	-	-	-
	OUTSEAM	28	29	30	34	36	38	-	-	-

Ladies Playing Spanks pictured

OUTERWEAR

FULL ZIP / HALF ZIP / HYBRID RAIN JACKET

FABRIC - 110gsm Waterproof Woven + Lining (Lining options: Fleece, Mesh, Interlock)

CODE - Full Zip - **PS-16140** (Adult) / **PS-16150** (Youth)
 Half Zip - **PS-16160** (Adult) / **PS-16170** (Youth)
 Hybrid Full Zip - **PS-16180** (Adult) / **PS-16190** (Youth)
 Hybrid Half Zip - **PS-16200** (Adult) / **PS-16210** (Youth)

SIZING - Adult: S - 5XL / Youth: YS - YXL

COLLAR - Hood

Additional Information: Made from waterproof fabric • Features a full zip hooded design with zip side pockets • Makes a great sideline and/or team jacket • Hybrid colours are available in Black, Navy, White • 3 lining options • Hybrid Jacket is offered in two profiles - full zip or 1/4 zip.



Sizes in CM

ADULT	CM	XS	S	M	L	XL	2XL	3XL	4XL	5XL
	CHEST	-	57	62	67	72	77	82	87	91
	LENGTH	-	72.5	74.5	76.5	78.5	80.5	82.5	84.5	86.5

YOUTH	CM	YXS (Y6)	YS (Y8)	YM (Y10)	YL (Y12)	YXL (Y14)
	CHEST	-	47	49.5	52	54.5
	LENGTH	-	60.5	63.5	66.5	69.5

Adults Full Zip Rain Jacket pictured

SOFTSHELL JACKET

FABRIC - 290gsm Softshell + Fleece Lining

CODE - **PS-16100** (Adult) / **PS-16110** (Youth)

SIZING - Adult: S - 4XL / Youth: YXS - YXL

COLLAR - Turtle Neck

Additional Information: Manufactured from our heavyweight woven soft-shell fabric • Wind and water resistant • Full zip with 2 side pockets • Optional fleece or mesh lining.



Sizes in CM

ADULT	CM	XS	S	M	L	XL	2XL	3XL	4XL	5XL
	CHEST	-	52	56	60	65	70	75	80	-
	LENGTH	-	71	73	75	77	79	81	83	-

YOUTH	CM	YXS (Y6)	YS (Y8)	YM (Y10)	YL (Y12)	YXL (Y14)
	CHEST	42	44	46	48	50
	LENGTH	52	56	60	64	68

Adults Softshell Jacket pictured



TRACK JACKET / PANTS

FABRIC - 110gsm Waterproof Woven + Lining (Lining options: Fleece, Mesh, Interlock)

CODE - Track Jacket - **PS-16220** (Adult) / **PS-16230** (Youth)
Track Pants - **PS-16240** (Adult) / **PS-16250** (Youth)

SIZING - Adult: S - 5XL / Youth: YS - YXL

COLLAR - Turtle Neck

WAIST - Elastic waistband

Additional Information: Made from waterproof fabric • Features a full zip design with zip side pockets, pants offer side leg zip • Makes a great sideline gear • 3 lining options • Please note that although fabric is waterproof the jacket is not seam sealed and therefore water may enter thru the seam.

TRACK JACKET		Sizes in CM								
ADULT	CM	XS	S	M	L	XL	2XL	3XL	4XL	5XL
	CHEST	-	52	56	60	65	70	75	80	85
	LENGTH	-	67	69	71	73	75	77	79	81
YOUTH	CM	YXS (Y6)	YS (Y8)	YM (Y10)	YL (Y12)	YXL (Y14)				
	CHEST	-	44	46	48	50				
	LENGTH	-	52	56	60	64				

TRACK PANTS		Sizes in CM								
ADULT	CM	XS	S	M	L	XL	2XL	3XL	4XL	5XL
	1/2 HIP	-	56	58	60	62	64	66	68	70
	OUTSEAM	-	106	107	108.5	108.5	110	111.5	112.5	113.5
YOUTH	CM	YXS (Y6)	YS (Y8)	YM (Y10)	YL (Y12)	YXL (Y14)				
	1/2 HIP	-	46	48	50	52				
	OUTSEAM	-	85	90	96	102				

Adults Track Jacket and Pants pictured

LETTERMAN / VARSITY JACKET

FABRIC - 290gsm Softshell + Fleece Lining

CODE - **PS-16120** (Adult) / **PS-16130** (Youth)

SIZING - Adult: S - 4XL / Youth: YXS - YXL

COLLAR - Tapered Neck

Additional Information: A classic design that is manufactured from our heavyweight woven soft-shell fabric • The soft-shell fabric is also wind and water resistant • Makes an excellent winter jacket when combined with our optional polar fleece liner.

LETTERMAN / VARSITY JACKET		Sizes in CM								
ADULT	CM	XS	S	M	L	XL	2XL	3XL	4XL	5XL
	CHEST	-	52	56	60	65	70	75	80	-
	LENGTH	-	71	73	75	77	79	81	83	-
YOUTH	CM	YXS (Y6)	YS (Y8)	YM (Y10)	YL (Y12)	YXL (Y14)				
	CHEST	42	44	46	48	50				
	LENGTH	52	56	60	64	68				



Adults Letterman pictured



PUFFER JACKET / VEST

FABRIC - Protek Soft-Shell 4- way Stretch
 CODE - PS-16120 (Adult) / PS-16130 (Youth)
 SIZING - Adult: S - 4XL / Youth: YXS - YXL
 COLLAR - Turtle Neck

Additional Information: Feature a full zip design with stand collars, side zip pockets and quilted woven fabric • Insulated with a lightweight and warm polyester holofill for warmth in cold winter conditions.

		Sizes in CM								
ADULT	CM	XS	S	M	L	XL	2XL	3XL	4XL	5XL
	CHEST	-	52	56	60	65	70	75	80	-
	LENGTH	-	71	73	75	77	79	81	83	-

		Sizes in CM				
YOUTH	CM	YXS (Y6)	YS (Y8)	YM (Y10)	YL (Y12)	YXL (Y14)
	CHEST	42	44	46	48	50
	LENGTH	52	56	60	64	68

Adults Puffer Vest pictured

ULTRA LIGHTWEIGHT RUNNING JACKET

FABRIC - 250gsm Spandex
 CODE - PS-16300 (Adult)
 SIZING - Adult: XS - 3XL
 COLLAR - Hood

Additional Information: Ultra lightweight running jacket that features an integrated hoodie, full zip design, vented back and side pockets • Constructed from our lightest weight woven fabric the jacket is incredibly light, durable, and breathable.

		Sizes in CM								
ADULT	CM	XS	S	M	L	XL	2XL	3XL	4XL	5XL
	CHEST	50	54	58	62	66	70	74	-	-
	LENGTH	70	72	74	76	78	80	82	-	-



Adults Ultra Lightweight Running Jacket pictured

TOUCH



CONTACT SINGLET

FABRIC - 165gsm Waffle
 CODE - PS-13100 (Adult) / PS-13110 (Youth) / PS-13120 (Ladies)
 SIZING - Adult: XS - 5XL / Youth: Y6 - Y14 / Ladies: L8 - L24
 COLLAR - Round Neck, V- Neck

Additional Information: Classic sleeveless singlets • 2 panel construction made from light weight waffle fabric.

Sizes in CM

ADULT	CM	XS	S	M	L	XL	2XL	3XL	4XL	5XL
	CHEST	49	54	56	58	60	63	66	69	71
	LENGTH	68	70	72	74	76	78	80	82	84

YOUTH	CM	YXS (Y6)	YS (Y8)	YM (Y10)	YL (Y12)	YXL (Y14)
	CHEST	38	40	42	44	46
	LENGTH	53	56	59	62	65

LADIES	CM	LS (L8)	LM (L10)	LL (L12)	LXL (L14)	L2XL (L16)	L3XL (L18)	L4XL (L20)	L5XL (L22)	L6XL (L24)
	CHEST	44	46	48	50	52	54	56	58	60
	LENGTH	60	62	64	66	68	70	72	74	76

CONTACT SHORTS

FABRIC - 165gsm Waffle
 CODE - PS-13130 (Adult) / PS-13140 (Youth) / PS-13150 (Ladies)
 SIZING - Adult: XS - 5XL / Youth: Y6 - Y14 / Ladies: L8 - L24
 WAIST - Elastic waistband

Additional Information: Traditional playing shorts • Also available in other fabric options.



Sizes in CM

ADULT	CM	XS	S	M	L	XL	2XL	3XL	4XL	5XL
	1/2 HIP	53	56	58	60	62	64	66	68	70
	OUTSEAM	35	37	39	41	43	45	47	49	51

YOUTH	CM	YXS (Y6)	YS (Y8)	YM (Y10)	YL (Y12)	YXL (Y14)
	1/2 HIP	43	45	47	49	51
	OUTSEAM	25	27	29	31	33

LADIES	CM	LS (L8)	LM (L10)	LL (L12)	LXL (L14)	L2XL (L16)	L3XL (L18)	L4XL (L20)	L5XL (L22)	L6XL (L24)
	1/2 HIP	51	53	55	57	59	61	63	65	67
	OUTSEAM	28	30	32	34	36	38	40	42	44

ACCESSORIES



KEGGER BAG

FABRIC - 600 Denier Polyester with Nylon Lining
 CODE - Normal Size: **PS-17100**
 Big Kegger: **PS-17110**
 SIZE - Small Kegger: 27.3cm (Diameter) x 48.2cm (Length)
 Big Kegger: 27.3cm (Diameter) x 68cm (Length)

Additional Information: Manufactured in 600 denier polyester • Features accent piping, removable shoulder strap and lined interior • Available in 2 sizes.



BLAST BAG

FABRIC - 600 Denier Polyester with Nylon Lining
 CODE - Normal Size: **PS-17120**
 Big Kegger: **PS-17130**
 SIZE - Small Blast: 27.3cm (Diameter) x 48.2cm (Length)
 Big Blast: 27.3cm (Diameter) x 68cm (Length)

Additional Information: Manufactured in 600 denier polyester • Features accent piping, removable shoulder strap and lined interior • Available in 2 sizes.



CINCH BAG

FABRIC - 110gsm Woven
 CODE - **PS-17140**
 SIZE - 38cm (Wide) x 42cm (Length)

Additional Information: Drawstring cinch bag makes a great piece to throw clothing, valuables, etc. • Fully Sublimated.



SHUTOUT BACK PACK

FABRIC - 600 Denier Polyester with Nylon Lining
 CODE - **PS-17150**
 SIZE - 33cm (Wide) x 53.3cm (Length)

Additional Information: Manufactured in 600 denier polyester • Expandable gusset design with durable zippers.



ARM SLEEVE

FABRIC - Interlock + Spandex
 CODE - PS-17160
 SIZE - One size - Pair
 Additional Information:



RUGBY/SOCCER/ HOCKEY SOCKS

FABRIC - 45% Nylon, 40% Cotton, 12% Lycra, 3% Polyester
 CODE - PS-17180
 SIZING - Adult: 2XS - 2XL
 CUFF - Fold Over

Additional Information:

Sizes in CM

ADULT	CM	2XS	XS	S	M	L	XL	2XL		
	FOOT WIDTH	14	15	18	21	24	27	29	-	-
	LENGTH	34	37	40	45	50	54	57	-	-



MID LENGTH SOCKS

FABRIC - 45% Nylon, 40% Cotton, 12% Lycra, 3% Polyester
 CODE - PS-17190
 SIZING - Adult: 2XS - 2XL

Additional Information:

Sizes in CM

ADULT	CM	2XS	XS	S	M	L	XL	2XL		
	FOOT LENGTH	-	14	16	18	20	22	24	-	-
	LENGTH	-	14	16	16	18	18	20	-	-



ANKLE SOCKS

FABRIC - 45% Nylon, 40% Cotton, 12% Lycra, 3% Polyester
 CODE - PS-17200
 SIZING - Adult: 2XS - 2XL

Additional Information:

Sizes in CM

ADULT	CM	2XS	XS	S	M	L	XL	2XL		
	FOOT LENGTH	14	15	18	21	24	27	29	-	-
	LENGTH	7	7	7	7	7	7	7	-	-





Result

SPIRO

WORK GUARD